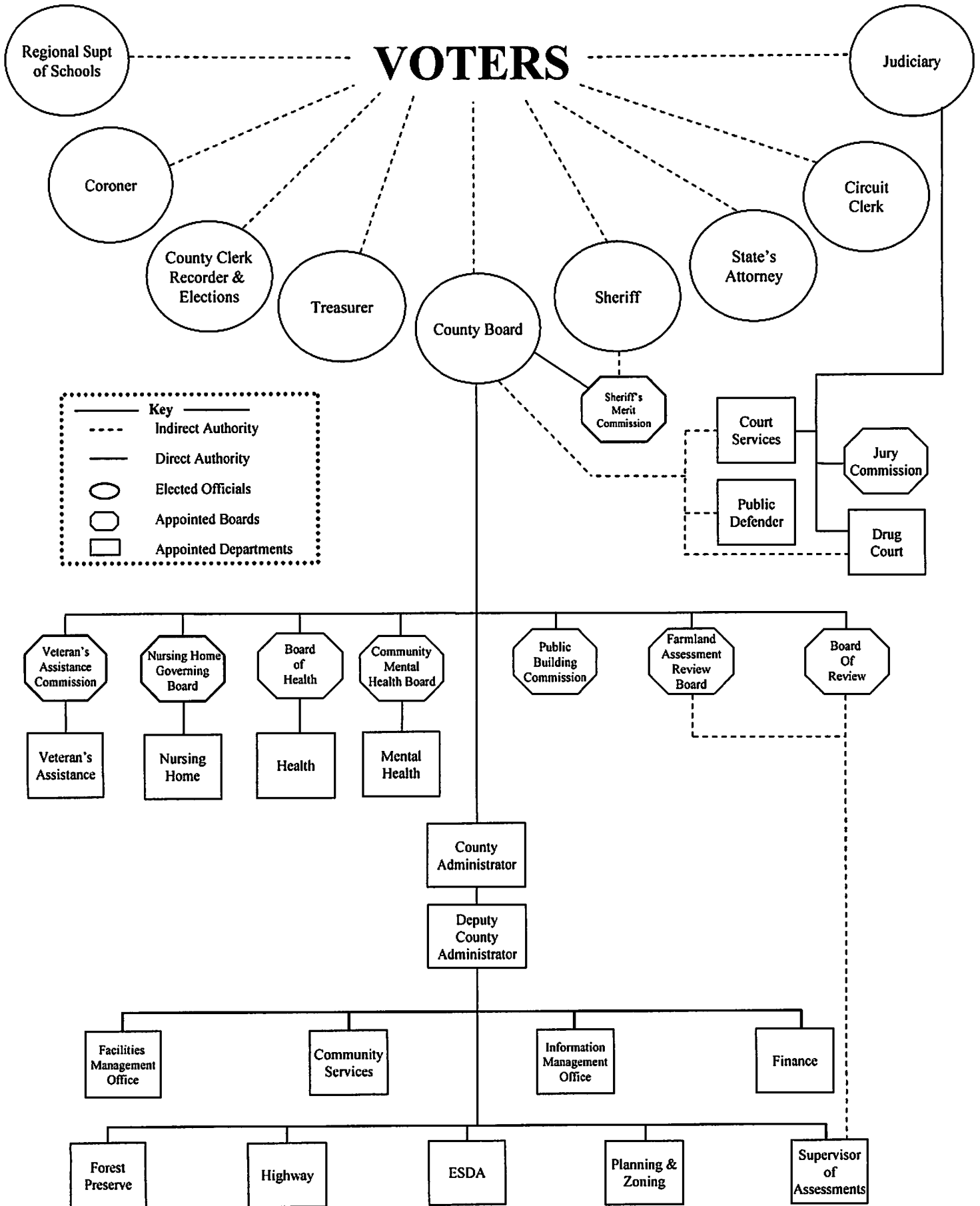


DeKalb County Government

**FY 2011  
BUDGET  
PLAN**

Salaries & Benefits

# DeKalb County Government Organizational Chart



**DEKALB COUNTY GOVERNMENT**

**FY 2011 BUDGET**

**ORGANIZATIONAL TABLE**

<u>DEPARTMENT</u>	<u>CLASSIFICATION</u>	<u>FLSA EXEMPT</u>	<u>CLASS NUMBER</u>	<u>HAY GRADE</u>	<u># OF FUNDED POSITIONS</u>	<u>TOTAL BIWEEKLY HOURS</u>
<b>COUNTY BOARD</b> (1110)	Administrative Intern	N	2133	-	0.50	40.00
	County Administrator	Y	1031	M5	1.00	80.00
	County Board Coordinator	N	2154	CT9	1.00	70.00
	<b>TOTAL</b>				<b>2.50</b>	
<b>FINANCE</b> (1210)	Accounting Clerk A	N	2105	CT7A	1.00	80.00
	Accounting Clerk A	N	5505	AC7A	1.00	70.00
	Accounting Supervisor	N	2502	-	1.00	80.00
	Administrative Assistant	N	5507	AC7A	1.00	80.00
	Benefits Coordinator	N	2150	CT7B	1.00	70.00
	Deputy Co. Administrator	Y	1051	M3	1.00	80.00
	Secretary A	N	2170	CT7B	0.10	8.00
	Secretary A - Webmaster	N	2174	CT7B	1.00	80.00
<b>TOTAL</b>					<b>7.10</b>	
<b>INFORMATION MANAGEMENT OFFICE</b> (1310)	Assistant Network Technician	N	2506	-	2.00	160.00
	Lead Assistant Network Technician	N	2537	LT13	1.00	80.00
	GIS Analyst	N	2528	-	1.00	80.00
	GIS Manager	Y	2529	AS11	1.00	80.00
	IMO Director	Y	1071	M2	1.00	80.00
	Lead Network Technician	Y	2538	-	1.00	80.00
	Network Infrastructure Technician	N	2549	-	1.00	80.00
	Network Technician	N	2548	-	1.00	80.00
	Project Assistant	N	2168	-	0.15	12.00
	Project Assistant - Defined	Y	2167	-	0.85	68.00
<b>TOTAL</b>					<b>10.00</b>	
<b>ASSESSMENTS OFFICE</b> (1410)	Administrative Clerk C	N	5511	AC6	2.00	140.00
	Administrative Clerk C (Part -Time)	N	5511	AC6	1.00	80.00
	Chief Co. Assessment Official	Y	1011	M1	1.00	80.00
	Chief Deputy of Assessments	N	5523	AA9	1.00	70.00
	Mapper/Appraiser I	N	5563	AA7	1.00	70.00
	Mapper/Appraiser II	N	5564	AA8	1.00	70.00
<b>TOTAL</b>					<b>7.00</b>	
<b>COUNTY CLERK &amp; RECORDER</b> (1510)	Administrative Clerk B	N	5510	AC7	1.00	70.00
	Administrative Clerk C	N	5511	AC6	2.00	145.00
	Administrative Secretary	N	5515	AC8	1.00	75.00
	Chief Deputy Recorder	N	5527	AA9	1.00	80.00
	County Clerk and Recorder	Y	0511	-	1.00	80.00
	Office Assistant A	N	5567	AC5	2.00	140.00
	Office Assistant B	N	5568	AC4	1.00	70.00
	Tax Extension Clerk	N	5585	AA8	1.00	80.00
<b>TOTAL</b>					<b>10.00</b>	

DEKALB COUNTY GOVERNMENT

FY 2011 BUDGET

ORGANIZATIONAL TABLE

DEPARTMENT	CLASSIFICATION	FLSA EXEMPT	CLASS NUMBER	HAY GRADE	# OF FUNDED POSITIONS	TOTAL BIWEEKLY HOURS
<b>ELECTIONS</b> (1530)	Chief Deputy of Elections	N	5524	AA8	1.00	70.00
	Office Assistant A	N	5567	AC5	1.00	70.00
	Office Assistant B	N	5568	AC4	1.00	70.00
	<b>TOTAL</b>				<b>3.00</b>	
<b>PLANNING &amp; ZONING</b> (1710)	Administrative Clerk A	N	5509	AC8	1.00	70.00
	Assistant Planner	N	5519	AA9	1.00	80.00
	Building Inspector	N	2517	AS9	0.20	16.50
	Chief Building Inspector	N	2515	-	1.00	80.00
	Code Enforcement Technician	N	5580	AA8	1.00	80.00
	Planning Director	Y	1091	M2	1.00	80.00
<b>TOTAL</b>					<b>5.20</b>	
<b>REG. OFFICE OF EDUCATION (1810)</b>	Administrative Clerk B	N	2125	CT7B	1.00	70.00
	Office Assistant (Part -Time)	N	2169	LT4	1.00	70.00
<b>TOTAL</b>					<b>2.00</b>	
<b>TREASURER</b> (1910)	Accounting Clerk A	N	5505	AC7A	1.00	70.00
	Administrative Clerk B	N	5510	AC7	1.00	70.00
	Chief Deputy Treasurer	N	5530	AA9	1.00	70.00
	Office Assistant B (Part -Time)	N	5568	AC4	0.50	35.00
	Treasurer	Y	0551	-	1.00	80.00
<b>TOTAL</b>					<b>4.50</b>	
<b>JUDICIARY</b> (2210)	Administrative Assistant	N	2115	-	1.00	70.00
	Bailiffs - Part Time	N	2145	-	2.75	192.50
	Chief Bailiff	N	2153	AS7	1.00	75.00
	Conflict Attorney (4 Part Time)	Y	2519	-	1.00	80.00
	Judicial Interpreter	N	2164	-	0.75	60.00
	Law Clerk	N	2159	-	0.40	28.00
<b>TOTAL</b>					<b>6.90</b>	
<b>JURY COMMISSION</b> (2220)	Jury Commission Clerk	N	2536	-	0.50	40.00
<b>TOTAL</b>					<b>0.50</b>	
<b>CIRCUIT CLERK</b> (2310)	Accounting Clerk B	N	2110	CT6	1.00	80.00
	Circuit Clerk	Y	0501	-	1.00	80.00
	Deputy Clerk	N	2155	AS4	14.00	985.00
	Supervisory Deputy Clerk	N	2185	AS8	4.00	285.00
<b>TOTAL</b>					<b>20.00</b>	

DEKALB COUNTY GOVERNMENT

FY 2011 BUDGET

ORGANIZATIONAL TABLE

DEPARTMENT	CLASSIFICATION	FLSA EXEMPT	CLASS NUMBER	HAY GRADE	# OF FUNDED POSITIONS	TOTAL BIWEEKLY HOURS
CORONER (2410)	Chief Deputy Coroner (Part -Time)	Y	2521	-	0.25	20.00
	Coroner	Y	0521	-	0.50	40.00
	Deputy Coroner (Part -Time)	Y	2523	-	0.25	20.00
	Executive Secretary	N	2161	CT9	0.25	20.00
	<b>TOTAL</b>				<b>1.25</b>	
ESDA (2510)	Assistant ESDA Coordinator	N	2570	-	0.10	8.00
	ESDA Coordinator	Y	2560	-	0.50	40.00
	Executive Secretary	N	2161	CT9	0.75	60.00
	<b>TOTAL</b>				<b>1.35</b>	
SHERIFF (2610)	Administrative Secretary	N	5515	AC8	1.00	80.00
	Chief Deputy Sheriff	Y	2522	SP3	1.00	80.00
	Detective	N	5130	FP8	6.00	480.00
	Evidence Control Officer	N	2524	AS9	0.50	40.00
	Lieutenant/Patrol	Y	2545	SP1	1.00	80.00
	Office Coordinator	N	2165	CT9	1.00	80.00
	Patrol	N	5140	FP8	21.00	1,680.00
	Patrol - Home Monitoring	N	5140	FP8	1.00	80.00
	Patrol - Kishwaukee College	N	5140	FP8	2.00	80.00
	Patrol - Kishwaukee Hospital	N	5140	FP8	1.00	80.00
	Secretary B	N	5583	AC6	3.50	280.00
	Sergeant/Detective	N	5125	FP11	1.00	80.00
	Sergeant/Patrol	N	5135	FP10	4.00	320.00
	Sgt./Patrol-Kish College	N	5135	FP10	1.00	80.00
Sherriff	Y	0531	-	1.00	80.00	
<b>TOTAL</b>				<b>46.00</b>		
SHERIFF - COMMO (2670)	Communications	N	5110	FP6	19.00	1,520.00
	Lieutenant/Commo	Y	2540	SP1	1.00	80.00
	Sergeant/Communications	N	5105	FP8	5.00	400.00
<b>TOTAL</b>				<b>25.00</b>		
SHERIFF - CORR (2680)	Corrections	N	5120	FP8	18.00	1,440.00
	Corrections (Part -Time)	N	2160	AS8	2.00	160.00
	Lieutenant/Corrections	Y	2542	SP1	1.00	80.00
	Sergeant/Corrections	N	5115	FP10	5.00	400.00
<b>TOTAL</b>				<b>26.00</b>		
STATE'S ATTORNEY (2710)	Attorney - Level One	Y	2507	-	5.00	400.00
	Attorney - Level Two	Y	2508	-	6.00	480.00
	Attorney - Level Three	Y	2510	-	1.00	80.00
	Legal Secretary B	N	5551	AC7	7.00	490.00
	Operations Manager	Y	2531	LT13	1.00	75.00
	State's Attorney	Y	0541	-	1.00	80.00
	Victim/Witness Assistant	N	5589	AA7	1.00	70.00
<b>TOTAL</b>				<b>22.00</b>		

DEKALB COUNTY GOVERNMENT

FY 2011 BUDGET

ORGANIZATIONAL TABLE

DEPARTMENT	CLASSIFICATION	FLSA EXEMPT	CLASS NUMBER	HAY GRADE	# OF FUNDED POSITIONS	TOTAL BIWEEKLY HOURS
PUBLIC DEFENDER (2810)	Administrative Secretary	N	2135	CT8	1.00	80.00
	Attorney - Level One	Y	2507	-	3.00	240.00
	Attorney - Level Two	Y	2508	-	2.00	160.00
	Attorney - Level Three	Y	2510	-	1.00	80.00
	Investigator	Y	2534	-	1.00	80.00
	Law Clerk	N	2159	-	0.25	20.00
	Secretary B	N	2175	CT6	1.00	80.00
	<b>TOTAL</b>				<b>9.25</b>	
COURT SERVICES (2910)	Administrative Clerk C	N	4280	CT6	1.00	75.00
	Comm. Restitution Services Coord.	N	6710	TP9	1.00	75.00
	Deputy Director	N	4110	CSA10	1.00	75.00
	Probation Officer - Adult	N	6720	TP9	5.00	375.00
	Probation Officer - Adult/Drug Court	N	6720	TP9	1.00	75.00
	Probation Officer - Juvenile	N	6730	TP9	4.00	300.00
	Probation Officer - Juv/Intensive	N	6730	TP9	2.00	150.00
	Secretary A	N	4270	CS4	1.00	75.00
	Supervisor - Juvenile	N	4125	CSA9	1.00	75.00
	<b>TOTAL</b>				<b>17.00</b>	
FACILITIES MGMT (4810)	Facilities Manager	Y	1061	MA	1.00	80.00
	General Maintenance	N	5555	AL9A	1.00	80.00
	Maintenance II	N	5556	AL10B	3.00	240.00
	Maintenance III	N	5557	AL10A	1.00	80.00
	Maintenance Supervisor	N	5560	AL12	1.00	80.00
	Offset Printer	N	5574	AA4	1.00	80.00
	Secretary B	N	5583	AC6	1.00	80.00
	<b>TOTAL</b>				<b>9.00</b>	
	<b>SUBTOTAL GENERAL FUND EMPLOYEES</b>				<b>235.55</b>	
COURT SECURITY (2650)	Corrections Officer	N	5120	FP8	4.00	320.00
	Patrol - Home Monitoring	N	5140	FP8	1.00	80.00
	Security Officer (Part -Time)	N	2550	-	1.00	80.00
	<b>TOTAL</b>				<b>6.00</b>	
HIGHWAY (3510)	Administrative Clerk C	N	5511	AC6	1.00	80.00
	County Engineer	Y	1041	M3	1.00	80.00
	Engineering Manager	Y	2505	M2	1.00	80.00
	Engineering Technician III	N	5543	AL11	3.00	240.00
	Highway Maintainer	N	5305	-	9.00	720.00
	Maintenance	N	5310	-	1.00	80.00
	Maintenance Foreman	Y	2547	AS11	1.00	80.00
	Mechanic	N	5320	-	2.00	160.00
	Operations Manager	Y	2530	M2	1.00	80.00
	Permit/Inventory Tech III	N	5575	AL11	1.00	80.00
	Support Services Manager	Y	2555	M2	1.00	80.00
	Traffic Control Technician	N	5330	-	2.00	160.00
	<b>TOTAL</b>				<b>24.00</b>	

DEKALB COUNTY GOVERNMENT

FY 2011 BUDGET

ORGANIZATIONAL TABLE

DEPARTMENT	CLASSIFICATION	FLSA EXEMPT	CLASS NUMBER	HAY GRADE	# OF FUNDED POSITIONS	TOTAL BIWEEKLY HOURS
PUBLIC HEALTH (3610)	Accounting Assistant	N	5603	-	1.00	75.00
	Accounting Clerk A	N	5604	CT7A	3.00	225.00
	Administrative Clerk C	N	5608	CT6	2.00	150.00
	Administrator	Y	3501	M3	1.00	75.00
	Animal Control Officer	N	5612	LT7A	2.00	150.00
	Assistant Administrator	Y	3502	-	1.00	75.00
	Case Manager	N	5620	-	2.00	150.00
	Communicable Disease Coord.	Y	3524	AS9	1.00	75.00
	Dir. of Environmental Health	Y	3532	AS11	1.00	75.00
	Dir. of Health Education	Y	3536	AS10	1.00	75.00
	Director of Home Care	Y	3537	SP1	1.00	75.00
	Director of Office Support	Y	3539	-	1.00	75.00
	Dir. of Personal Health Services	Y	3540	-	1.00	75.00
	Family Planning Coordinator	Y	3544	AS10	1.00	75.00
	Director of Fiscal Operations	Y	3545	-	1.00	75.00
	Health Educator	N	5647	-	1.50	112.50
	Hearing & Vision Technician	N	5648	AS6	0.50	37.50
	HIV/STD Prevention Specialist	N	5683	-	1.00	75.00
	HIV/STD Clinical Team Leader	Y	3548	-	1.00	75.00
	Home Care Administrative Asst.	N	5622	-	1.00	75.00
	Home Care Office Coordinator	Y	3549	-	1.00	75.00
	Insurance Case Mgmt. Coordinator	Y	3555	-	1.00	75.00
	Home Health - CNA	N	5656	AS4	3.00	225.00
	Home Health - RN	N	5657	-	12.00	900.00
	Licensed Env. Health Practitioner	N	5660	-	0.40	30.00
	LEHP in Training/Sanitarian	N	5688	-	2.00	150.00
	Nutritionist	N	5668	AS7	2.50	187.50
	Office Assistant B	N	5672	CT4	1.50	112.50
	Patient Care Coordinator	N	3560	-	1.00	75.00
	Pediatric Services Coordinator	Y	3581	-	1.00	75.00
	Program Development Coordinator	N	3585	-	1.00	75.00
	Public Health Associate	N	5682	-	1.00	75.00
	Public Health Nurse	N	5684	AS9	10.00	750.00
Quality Improvement Assistant	N	5686	-	1.00	75.00	
Secretary/Case Manager Assistant	N	5625	CT6	1.00	75.00	
Secretary/Clinic Aide	N	5626	CT6	1.00	75.00	
Secretary B	N	5693	CT6	10.00	750.00	
Senior Biller	N	5689	-	1.00	75.00	
WIC/FCM Program Coordinator	Y	3595	-	1.00	75.00	
WIC/FCM Team Leader	Y	3596	-	1.00	75.00	
	<b>TOTAL</b>				<b>78.40</b>	
SOLID WASTE PROGRAM (3650)	Licensed Env. Health Practitioner	N	5660	-	0.60	45.00
	<b>TOTAL</b>				<b>0.60</b>	

**DEKALB COUNTY GOVERNMENT**

**FY 2011 BUDGET**

**ORGANIZATIONAL TABLE**

<u>DEPARTMENT</u>	<u>CLASSIFICATION</u>	<u>FLSA EXEMPT</u>	<u>CLASS NUMBER</u>	<u>HAY GRADE</u>	<u># OF FUNDED POSITIONS</u>	<u>TOTAL BIWEEKLY HOURS</u>
<b>MENTAL HEALTH (3710)</b>	Administrative Assistant	N	3715	-	1.00	80.00
	Administrator	Y	3701	AS11	1.00	80.00
	<b>TOTAL</b>				<b>2.00</b>	
<b>COMMUNITY SERVICES (4410)</b>	Case Manager	N	2152	CT8	3.00	225.00
	Community Services Director	Y	1021	MB	1.00	80.00
	Office Coordinator	N	2165	CT9	1.00	80.00
	Program Coordinator	N	2166	AS8	1.00	75.00
<b>TOTAL</b>				<b>6.00</b>		
<b>VETERANS' ASSIST (4610)</b>	Driver (Part - Time)	N	4662	CT5	1.00	80.00
	Executive Secretary	N	4661	CT9	1.00	80.00
	Service Officer	N	4663	AS9	2.00	160.00
	Superintendent	Y	4601	AS11	1.00	80.00
<b>TOTAL</b>				<b>5.00</b>		
<b>COURT AUTOMATION (5340)</b>	Deputy Clerk	N	2155	AS4	2.75	193.00
	<b>TOTAL</b>				<b>2.75</b>	
<b>CHILD SUPPORT (5350)</b>	Deputy Clerk	N	2155	AS4	1.00	70.00
	<b>TOTAL</b>				<b>1.00</b>	
<b>MICROGRAPHICS (5520)</b>	Office Assistant B	N	5568	AC4	2.00	140.00
	<b>TOTAL</b>				<b>2.00</b>	
<b>TAX SALE AUTOMATION (5370)</b>	Office Assistant B (Part - Time)	N	5568	AC4	0.50	35.00
	<b>TOTAL</b>				<b>0.50</b>	
<b>DRUG COURT (5620)</b>	Special Court Administrator	Y	2533	-	1.00	80.00
	<b>TOTAL</b>				<b>1.00</b>	
<b>HISTORY ROOM (6530)</b>	Assistant Historian	N	2535	-	0.30	24.00
	Historian	N	2533	-	0.30	24.00
	<b>TOTAL</b>				<b>0.60</b>	
<b>SUBTOTAL COUNTY EMPLOYEES EXCLUDING REHAB &amp; NURSING CENTER</b>					<b>365.40</b>	



DEKALB COUNTY GOVERNMENT

FY 2011 BUDGET

ORGANIZATIONAL TABLE

DEPARTMENT	CLASSIFICATION	FLSA EXEMPT	CLASS NUMBER	HAY GRADE	# OF FUNDED POSITIONS	TOTAL BIWEEKLY HOURS
NURSING-REHAB. (3840)	Restorative Nurse - LPN	N	3166	-	1.00	77.50
	Restorative Nurse - RN	N	3165	AS9	1.00	77.50
	Restorative Aide	N	5969	NS4	4.00	310.00
	<b>TOTAL</b>				<b>6.00</b>	
NURSING-SOCIAL SERVICES (3860)	Director of Social Services	Y	3360	AS10	1.00	77.50
	Social Service Assistant	N	3182	AS8	2.00	155.00
	Social Srvc/Med Records Tech.	N	3183	-	1.00	77.50
	<b>TOTAL</b>				<b>4.00</b>	
NURSING-PATIENT ACTIVITY (3870)	Activity Aide	N	5910	NS3	4.75	368.13
	Director of Activities	Y	3330	AS8	1.00	77.50
	<b>TOTAL</b>				<b>5.75</b>	
NURSING-DIETARY (3880)	Assistant Director of Dietary	N	3304	AS8	1.00	77.50
	Cook II	N	5918	NL9B	3.60	279.00
	Dietary Aide	N	5922	NL3	18.00	1,395.00
	Director of Dietary Services	Y	3335	AS10	1.00	77.50
	Lead Cook	N	5917	-	1.00	77.50
	<b>TOTAL</b>				<b>24.60</b>	
NURSING-SPECIAL CARE (3930)	Activity Aide	N	5910	NS3	3.00	232.50
	Director of Special Care Unit	Y	3365	-	1.00	77.50
	Nurse's Assistant - CNA	N	5951	-	15.00	1,162.50
	Staff Nurse - LPN	N	5986	-	2.20	170.50
	Staff Nurse - RN	N	3187	-	1.50	116.25
	<b>TOTAL</b>				<b>22.70</b>	
NURSING-NURSING (3950)	Assistant Director of Nursing	Y	3310	SP1	1.00	77.50
	Care Plan Coordinator	N	3114	AS10	1.00	77.50
	Clinical Support Services Coord.	N	3121	-	1.00	77.50
	Director of Nursing	Y	3350	SP3	1.00	77.50
	Nurse's Assistant - CNA	N	5951	-	53.00	4,107.50
	Administrative Secretary	N	3150	-	1.00	77.50
	RN Charge Nurse	N	3173	AS10	3.00	232.50
	RN House Supervisor	N	3174	AS11	3.00	232.50
	Schedule Coordinator	N	3175	-	1.00	77.50
	Staff Nurse - LPN	N	5986	-	3.90	302.25
	Staff Nurse - RN	N	3187	AS9	17.00	1,317.50
	Unit Assistant	N	5994	-	3.50	271.25
	Unit Clerk	N	5993	-	1.00	77.50
	Ward Secretary	N	5995	NC6	2.00	155.00
	<b>TOTAL</b>				<b>92.40</b>	

DEKALB COUNTY GOVERNMENT

FY 2011 BUDGET

ORGANIZATIONAL TABLE

DEPARTMENT	CLASSIFICATION	FLSA EXEMPT	CLASS NUMBER	HAY GRADE	# OF FUNDED POSITIONS	TOTAL BIWEEKLY HOURS
NURSING-ENV . SERVICES (3960)	Director of Environmental Services	Y	3315	LT8	1.00	77.50
	Housekeeping Aide	N	5930	NL3	9.00	697.50
	Laundry Worker I	N	5935	NL3	4.00	310.00
	Lead Housekeeper	N	3320	LT8	1.00	77.50
	<b>TOTAL</b>				<b>15.00</b>	
NURSING-MAINT. (3970)	Groundskeeper	N	3125	-	0.30	23.25
	Maintenance I	N	5939	NL8A	1.00	77.50
	Maintenance Supervisor	N	5946	LT12	1.00	77.50
<b>TOTAL</b>				<b>2.30</b>		
NURSING-ADMIN. (3980)	Accounting Clerk A	N	3105	CT7A	1.00	77.50
	Accounting Clerk B	N	3106	CT6	2.00	155.00
	Administrator	Y	3301	M4	1.00	80.00
	Business Manager	Y	3325	AS11	1.00	77.50
	Payroll Clerk	N	3155	CT6	1.00	77.50
	Receptionist	N	5963	NC4	2.00	155.00
<b>TOTAL</b>				<b>8.00</b>		
<b>SUBTOTAL REHAB &amp; NURSING CENTER EMPLOYEES</b>					<b>180.75</b>	
<b>GRAND TOTAL COUNTY EMPLOYEES</b>					<b><u>546.15</u></b>	
FOREST PRESERVE (4210)	Park Manager	N	7106	-	1.00	80.00
	Park Manager/Part-time	N	7105	LT8C	1.50	120.00
	Maintenance/Part-time	N	7110	-	0.85	68.00
	Maintenance Supervisor	N	7115	LT12A	1.00	80.00
	Natural Resource Manager	N	7130	-	0.66	53.00
	Superintendent	Y	7101	M1	1.00	80.00
<b>TOTAL FOREST PRESERVE EMPLOYEES</b>					<b><u>6.01</u></b>	

**DEKALB COUNTY GOVERNMENT**

**FY 2011 BUDGET**

**ORGANIZATIONAL TABLE**

<u>DEPARTMENT</u>	<u>CLASSIFICATION</u>	<u>FLSA EXEMPT</u>	<u>CLASS NUMBER</u>	<u>HAY GRADE</u>	<u># OF FUNDED POSITIONS</u>	<u>TOTAL BIWEEKLY HOURS</u>
<b>BOARDS &amp; COMMISSIONS</b>						
Board of Review			0301	-	3.00	-
County Board Chairperson			0101	-	1.00	-
County Board Vice-Chairperson			0102	-	1.00	-
County Board Standing Committee Chairperson			0103	-	8.00	-
County Board Member (including above chairperson positions)			0105	-	24.00	-
Farmland Assessment Review Committee			0302	-	4.00	-
Jury Commission			0304	-	3.00	-
Merit Commission			0305	-	3.00	-
<b>UNFUNDED POSITIONS</b>						
<b>INFORMATION MANAGEMENT OFFICE (1310)</b>	Cartographer	N	5520	AA8	1.00	80.00
	GIS Technician	N	5553	AA8	1.00	80.00
	<b>TOTAL</b>				<b>2.00</b>	
<b>SHERIFF (2610)</b>	Detective	N	5130	FP8	1.00	80.00
	Patrol	N	5140	FP8	2.00	160.00
	<b>TOTAL</b>				<b>3.00</b>	
<b>SHERIFF - COMMO (2670)</b>	Communications	N	5110	FP6	1.00	80.00
	<b>TOTAL</b>				<b>1.00</b>	
<b>SHERIFF - CORR (2680)</b>	Corrections	N	5120	FP8	2.00	160.00
	<b>TOTAL</b>				<b>2.00</b>	
<b>HIGHWAY (3510)</b>	Clerk/Typist	N	5531	AC3	0.50	40.00
	Engineering Technician II	N	5542	AL10B	1.00	80.00
	<b>TOTAL</b>				<b>1.50</b>	
<b>FACILITIES MGMT (4810)</b>	General Maintenance	N	5555	AL9A	1.00	80.00
	<b>TOTAL</b>				<b>1.00</b>	
<b>COMM OUTRCH BLDG (4910)</b>	Housekeeper/Custodian II	N	5549	AC4	1.00	80.00
	<b>TOTAL</b>				<b>1.00</b>	
	<b>TOTAL UNFUNDED POSITIONS</b>				<b>11.50</b>	

**NON-UNION HAY SALARY SYSTEM FOR DEKALB COUNTY GOVERNMENT - FY 2011**

Hay Code	Basis Mid Points	2080			1820			1950			2015	
		Hours Minimum	Hours Midpoint	Hours Maximum	Hours Minimum	Hours Minimum	Hours Minimum	Hours Minimum	Hours Minimum	Hourly Rate Minimum	Hourly Rate Maximum	
M5	1180	70,429	88,036	115,257	61,625	66,027	68,228	33.86	55.41			
M4	833	59,459	74,324	97,305	52,027	55,743	57,601	28.59	46.78			
M3	700	55,255	69,069	90,425	48,348	51,802	53,528	26.56	43.47			
M2	588	51,713	64,641	84,628	45,249	48,481	50,097	24.86	40.69			
M1	494	48,742	60,928	79,767	42,649	45,696	47,219	23.43	38.35			
MA	415	46,245	57,806	75,680	40,464	43,355	44,800	22.23	36.38			
MB	349	44,159	55,199	72,267	38,639	41,399	42,779	21.23	34.74			
SP3	700	55,255	69,069	90,425	48,348	51,802	53,528	26.56	43.47			
SP2	588	51,713	64,641	84,628	45,249	48,481	50,097	24.86	40.69			
SP1	494	48,742	60,928	79,767	42,649	45,696	47,219	23.43	38.35			
AS11	415	48,919	59,296	76,013	42,804	45,862	47,390	23.52	36.54			
AS10	349	42,652	51,699	66,274	37,321	39,986	41,319	20.51	31.86			
AS9	293	37,335	45,254	58,012	32,668	35,002	36,168	17.95	27.89			
AS8	246	32,872	39,845	51,078	28,763	30,818	31,845	15.80	24.56			
AS7	207	29,169	35,356	45,324	25,523	27,346	28,257	14.02	21.79			
AS6	174	26,036	31,559	40,456	22,782	24,409	25,222	12.52	19.45			
AS5	146	22,380	27,127	34,775	19,583	20,981	21,681	10.76	16.72			
AS4	122	21,099	25,575	32,785	18,462	19,780	20,440	10.14	15.76			
AS3	103	19,295	23,388	29,982	16,883	18,089	18,692	9.28	14.41			
CT9	262	32,350	39,212	50,267	28,306	30,328	31,339	15.55	24.17			
CT8	207	28,224	34,211	43,856	24,696	26,460	27,342	13.57	21.08			
CT7	182	26,348	31,937	40,941	23,055	24,701	25,525	12.67	19.68			
CT6	146	23,648	28,664	36,745	20,692	22,170	22,909	11.37	17.67			
CT5	122	21,848	26,483	33,949	19,117	20,483	21,165	10.50	16.32			
CT4	102	20,349	24,665	31,619	17,805	19,077	19,713	9.78	15.20			
CT3	86	19,147	23,209	29,752	16,754	17,950	18,549	9.21	14.30			
LT13	293	44,255	53,642	68,765	38,723	41,489	42,872	21.28	33.06			
LT12	246	36,713	44,500	57,046	32,124	34,418	35,566	17.65	27.43			
LT11	207	36,361	44,074	56,500	31,816	34,088	35,225	17.48	27.16			
LT10A	174	33,375	40,454	51,859	29,203	31,289	32,332	16.05	24.93			
LT10B	174	30,056	36,432	46,703	26,299	28,178	29,117	14.45	22.45			
LT9A	146	26,917	32,627	41,825	23,552	25,235	26,076	12.94	20.11			
LT9B	146	22,262	26,984	34,591	19,479	20,871	21,566	10.70	16.63			
LT8A	123	25,559	30,981	39,715	22,364	23,962	24,760	12.29	19.09			
LT8B	123	17,815	21,594	27,682	15,588	16,702	17,258	8.56	13.31			
LT7A	103	20,611	24,983	32,026	18,035	19,323	19,967	9.91	15.40			
LT7B	103	18,679	22,641	29,024	16,344	17,512	18,095	8.98	13.95			
LT6	86	17,278	20,943	26,847	15,118	16,198	16,738	8.31	12.91			
LT5A	72	16,126	19,547	25,058	14,110	15,118	15,622	7.75	12.05			
LT5B	72	15,392	18,657	23,917	13,468	14,430	14,911	7.40	11.50			
LT4	61	17,786	21,559	27,637	15,563	16,674	17,230	8.55	13.29			
LT3	51	16,970	20,570	26,369	14,849	15,909	16,440	8.16	12.68			

**DEKALB COUNTY GOVERNMENT**

**FY 2011 BUDGET**

**ELECTED OFFICIALS**

<u>CLASS NUMBER</u>	<u>CLASSIFICATION</u>	<u>FY 2009</u>	<u>FY 2010</u>	<u>FY 2011</u>	<u>FY 2012</u>	<u>FY 2013</u>	<u>FY 2014</u>
0101	County Board Chairperson	9,000	10,000	10,000	10,200	(5)	(5)
0102	County Board Vice-Chairperson	2,400	2,400	2,400	2,400	(5)	(5)
0103	Committee Chairperson (1)	110/month	115/month	115/month	115/month	(5)	(5)
0105	County Board Member	80/Diem	80/Diem	85/Diem	90/Diem	(5)	(5)
0501	Circuit Clerk (2)	84,475	87,850	91,375	95,000	(5)	(5)
0511	County Clerk and Recorder (3)	79,300	83,500	83,500	85,200	87,750	91,250
0521	Coroner - 1/2 (3)	49,875	52,375	55,000	57,750	(5)	(5)
0531	Sheriff (3)	113,200	119,200	119,200	121,600	125,250	130,250
0541	State's Attorney (4)	166,508	166,508				
0551	Treasurer (3)	79,300	83,500	83,500	85,200	87,750	91,250

- (1) Each committee chairperson will earn \$115/month, regardless of whether or not the committee actually meets.
- (2) 5% of displayed salary must be placed in an employer-sponsored deferred compensation program.
- (3) 3% of displayed salary must be placed in an employer-sponsored deferred compensation program.
- (4) The State's Attorney's salary is set by the State and is in effect for the State's fiscal year (July 1-June 30). The FY2010 salary took effect July 1, 2009. The FY2011 salary was not available at the time of printing.
- (5) Salary must be set at least 180 days before the November, 2012 election.

**County Board:**

There are 24 Board Members who are elected 2 each from 12 districts in the County. Every two years 12 are elected to serve for 4 year terms. The 24 members then elect from themselves one member to serve as County Board Chair and one member to serve as County Board Vice-Chair for two year terms. All 24 members serve on two of seven standing committees. The Chair of each standing committee serves on the Executive Committee along with the Board Chair and Vice-Chair.

# DEKALB COUNTY GOVERNMENT

## FY 2011 BUDGET

### EXEMPT PAY PLAN

1. Nine management positions are a part of this pay plan; however the County Administrator is not a part of the merit and bonus parts of the program:

<u>Class</u>	<u>Hay</u>	<u>Position Title</u>
1011	M1	Chief County Assessment Official
1021	MB	Community Services Director
1031	M5	County Administrator
1041	M3	County Engineer
1051	M3	Deputy County Administrator
1061	MA	Facilities Manager
1071	M2	Information Management Director
1091	M2	Planning Director
7101	M1	Forest Preserve Superintendent

2. Salary adjustments will include both a cost-of-living increase and a merit increase and both will be awarded as a combined amount as of the start of each fiscal year.
3. Salaries for new exempt employees will be set by the County Board at time of hiring; there is no minimum or maximum salary range.
4. The cost-of-living (COLA) component of the salary increase will be set by the County Board as part of the annual budget.
5. The merit review of the employee will be done annually prior to the start of a fiscal year. A merit review includes (a) the successful completion, as determined by the County Administrator, of a Professional Development component; this is a minimum of 40 hours to learn about and improve in the areas of staff management, financial management, policy facilitation/implementation, and service delivery, and (b) successful completion, as determined by the Oversight Committee, of the components of a Standard Work Plan which was previously approved by the Oversight Committee. If a merit increase is earned, the amount of the merit increase will be set by the County Board Executive Committee.
6. A lump sum bonus, not added to the salary base, may be earned by an exempt employee for exceptional performance. The amount, awarded by the Executive Committee, may be from zero to ten percent. The employee may choose to receive all or part of the award into the deferred compensation program.
7. A percentage of the salary base, as determined by years of service in an exempt position, is paid to an exempt employee on a bi-weekly basis for deposit into one of the County's deferred compensation programs, the IMRF Voluntary Additional Contribution program, or to be invested in United States Savings Bonds. The percentage breakdown is: 0 - 1 year of service = 0%; 1 through 7 years = 3%; 8 through 14 years = 4%; 15 years or more = 5%.
8. After one year in an exempt position, the employee may elect to participate in a disability insurance program at an employee cost of \$9.92/ month and an employer cost of \$30/month.
9. The Chief County Assessment Official may receive an annual stipend of \$3,000 from the state if the stipend requirements are met.

**DEKALB COUNTY GOVERNMENT**

**FY 2011 BUDGET**

**MISCELLANEOUS APPOINTED OFFICIALS**

<u>CLASS NUMBER</u>	<u>CLASSIFICATION</u>	<u>AUTHORIZED POSITIONS</u>	<u>NUMBER OF EMPLOYEES</u>	<u>INDIVIDUAL SALARY</u>
0301	Board of Review*	3.00	3.00	9,900
0302	Farmland Assessment Review	4.00	4.00	50.00/mtg
0304	Jury Commissioner	3.00	3.00	2,500
0305	Merit Commissioner	3.00	3.00	60.00/mtg

\*Board of Review salary of \$9,900 is for Assessment Year May 1, 2010 to April 30, 2011.

There is no change to the salary for Assessment Year May 1, 2011 to April 30, 2012.

**DEKALB COUNTY GOVERNMENT**

**FY 2011 BUDGET**

**CLERICAL, LABOR, AND SERVICE**

<u>CLASS NUMBER</u>	<u>HAY CODE</u>	<u>CLASSIFICATION</u>	<u>AUTHORIZED POSITIONS</u>	<u>APPROVED SALARY RANGE</u>		
				<u>Beginning of Range</u>	<u>Maximum Hiring</u>	<u>Top of Range</u>
2105	CT7A	Accounting Clerk A	1.00	14.25	15.67	22.36
2110	CT6	Accounting Clerk B	1.00	11.15	12.26	17.36
2115	-	Administrative Assistant	1.00			22.43
2120	CT8	Administrative Clerk A	0.00	13.30	14.63	20.70
2125	CT7B	Administrative Clerk B	1.00	12.41	13.65	19.32
2130	CT6	Administrative Clerk C	0.00	11.15	12.26	17.36
2133	-	Administrative Intern	0.50			
2135	CT8	Administrative Secretary	1.00	13.30	14.63	20.70
2145	-	Baliff-Part Time	2.75	11.45	12.59	17.72
2150	CT7B	Benefits Coordinator	1.00	12.41	13.65	19.32
2152	CT8	Case Manager	3.00	13.32	14.65	20.77
2153	AS7	Chief Bailiff	1.00	13.75	15.13	21.41
2156	AS8	Compliance Officer	0.00	15.50	17.05	24.13
2160	-	Corrections (P/T)	2.00		(1)	
2154	CT9	County Board Coordinator	1.00	15.24	16.77	23.79
2155	AS4	Deputy Clerk	17.75	9.92	10.92	15.49
2161	CT9	Executive Secretary	1.00	15.24	16.77	23.73
2162	CT5	Intake Worker	0.00	10.29	11.32	16.05
2164	-	Judicial Interpreter	0.75		(2)	
2163	CT8	Judicial Secretary	0.00	13.30	14.63	20.70
2159	-	Law Clerk	0.65		(2)	
2169	LT4	Office Assistant	1.00	8.37	9.21	12.60
2165	CT9	Office Coordinator	2.00	15.24	16.77	23.78
2166	AS8	Program Coordinator	1.00	15.50	17.05	24.13
2167	-	Project Assistant - defined	0.85		(3)	
2168	-	Project Assistant	0.15		(3)	
2170	CT7B	Secretary A	0.10	12.41	13.65	19.32
2174	CT7B	Secretary A - Webmaster	1.00	12.41	13.65	19.32
2175	CT6	Secretary B	1.00	11.15	12.26	17.36
2185	AS8	Supervisor Deputy Clerk	4.00	15.50	17.05	24.13
TOTAL			<u>47.50</u>			

(1) Salary set by the sheriff.

(2) Hourly rate set by the Judiciary.

(3) Represents multiple part-time positions with variable rates for various tasks; total salaries paid in 2011 cannot exceed \$20,000.



**DEKALB COUNTY GOVERNMENT**

**FY 2011 BUDGET**

**ADMINISTRATIVE AND MID-MANAGEMENT**

CLASS NUMBER	HAY CODE	CLASSIFICATION	AUTHORIZED POSITIONS	APPROVED SALARY RANGE		
				Beginning of Range	Maximum Hiring	Top of Range
2502	-	Accounting Supervisor	1.00	21.50	23.65	35.26
2570	-	Assistant ESDA Coordinator	0.10		(2)	2,600
2535	-	Assistant Historian	0.30		(2)	4,000
2506	-	Assistant Network Technician	2.00	18.20	20.03	29.86
2517	AS9	Building Inspector	0.20	17.60	19.36	27.41
2515	-	Chief Building Inspector	1.00	21.43	23.57	30.78
2521	-	Chief Deputy Coroner (Part-time)	0.25		(1)	
2522	SP3	Chief Deputy Sheriff	1.00	36.44	40.09	53.77
2523	-	Deputy Coroner (Part-time)	0.25		(1)	
2505	M2	Engineering Manager	1.00	23.48	25.83	39.97
2560	-	ESDA Coordinator	0.50		(2)	40,800
2524	AS9	Evidence Control Officer	0.50	17.60	19.36	27.41
2528	-	GIS Analyst	1.00	21.50	23.65	35.26
2529	AS11	GIS Manager	1.00	23.05	25.35	35.91
2533	-	Historian	0.30		(2)	6,500
2534	-	Investigator	1.00	17.64	19.41	27.02
2536	-	Jury Commission Clerk (3)	0.50	13.30	14.63	20.70
2537	LT13	Lead Assistant Network Technician	1.00	20.87	22.96	32.48
2538	-	Lead Network Technician	1.00	23.63	25.99	37.20
2540	SP1	Lieutenant of Communications	1.00	37.58	41.33	61.63
2542	SP1	Lieutenant of Corrections	1.00	37.58	41.33	61.63
2545	SP1	Lieutenant of Patrol	1.00	37.58	41.33	61.63
2547	AS11	Maintenance Foreman - Hwy.	1.00	23.05	25.35	35.91
2549	-	Network Infrastructure Technician	1.00	21.50	23.65	35.26
2548	-	Network Technician	1.00	21.50	23.65	35.26
2530	M2	Operations Manager - Hwy	1.00	23.48	25.83	39.97
2531	LT13	Operations Manager - SAO	1.00	20.86	22.95	32.48
2550	-	Security Officer (3)	1.00	12.26	13.48	19.10
2533	-	Special Court Administrator	1.00		(3)	
2555	M2	Support Services Manager	<u>1.00</u>	23.48	25.83	39.97
<b>TOTAL</b>			<b><u>24.90</u></b>			

(1) Part-time Deputy Coroners are budgeted at a total cost of \$40,800 with the distribution to each deputy done at the discretion of the coroner.

(2) Annual salary set by the County Board.

(3) Salary set in conjunction with the Judiciary.

**DEKALB COUNTY GOVERNMENT**

**FY 2011 BUDGET**

**PROFESSIONAL LEGAL STAFF**

<u>JOB CLASS</u>	<u>APPROVED SALARY RANGE</u>			<u>AUTHORIZED POSITIONS</u>		
	<u>Beginning of Range</u>	<u>Maximum Hiring*</u>	<u>Top of Range</u>	<u>State's Attorney</u>	<u>Public Defender</u>	<u>Judiciary</u>
2507 Attorney-Level One (a)	41,145	45,259	67,468	5.00	3.00	0.00
2508 Attorney-Level Two	54,858	60,344	89,957	6.00	2.00	0.00
2510 Attorney-Level Three (b)	68,574	75,431	97,456	1.00	1.00	0.00
2519 Conflict Attorney (c)			22,500	<u>0.00</u>	<u>0.00</u>	<u>1.00</u>
<b>TOTALS</b>				<u>12.00</u>	<u>6.00</u>	<u>1.00</u>

The number of authorized positions does not include the position of elected State's Attorney.

\*Hiring levels are discretionary, within total budgeted funds.

(a) One Level One attorney in the Public Defender's Office is authorized to receive a \$4,000 stipend due to performing some Level Two duties.

(b) The Level Three attorney in the Public Defender's Office (the Public Defender) receives a salary that is 90% of the State's Attorney's salary.

(c) Four individuals fill this part-time position, each earning \$22,500.

**DEKALB COUNTY GOVERNMENT**

**FY 2011 BUDGET**

**CLERICAL, LABOR, AND SERVICE  
REHAB AND NURSING CENTER**

<u>CLASS NUMBER</u>	<u>HAY CODE</u>	<u>CLASSIFICATION</u>	<u>AUTHORIZED POSITIONS</u>	<u>APPROVED SALARY RANGE</u>		
				<u>Beginning of Range</u>	<u>Maximum Hiring</u>	<u>Top of Range</u>
3105	CT7A	Accounting Clerk A	1.00	12.81	14.09	21.45
3106	CT6	Accounting Clerk B	2.00	9.80	10.78	16.28
3150	-	Administrative Secretary	1.00	11.66	12.83	18.16
3114	AS10	Care Plan Coordinator	1.00	19.74	21.71	32.18
3121	AS11	Clinical Support Service Coord.	1.00	22.01	24.21	0.00
3125	-	Groundskeeper	0.30	7.50	8.25	11.59
3131	AS9	Inservice Education Instructor	0.00	22.01	24.21	36.06
3155	CT6	Payroll Clerk	1.00	9.80	10.78	16.28
3120	-	Quality of Care Manager	0.00	22.01	24.21	36.06
3165	AS9	Restorative Nurse - RN	1.00	20.33	22.36	32.18
3166	-	Restorative Nurse - LPN	1.00	17.90	19.69	24.56
3173	AS10	RN Charge Nurse	3.00	20.33	22.36	32.18
3174	AS11	RN House Supervisor	3.00	22.01	24.21	36.06
3175	-	Schedule Coordinator	1.00	11.66	12.83	18.16
3182	AS8	Social Service Assistant	2.00	13.63	14.99	22.66
3183	-	Social Srvc/Med Records Tech	1.00	10.53	11.58	15.95
3187	AS9	Staff Nurse - RN	<u>18.50</u>	19.25	21.18	28.07
		<b>TOTAL</b>	<u><b>37.80</b></u>			

**DEKALB COUNTY GOVERNMENT**

**FY 2011 BUDGET**

**ADMINISTRATIVE AND MID-MANAGEMENT  
REHAB AND NURSING CENTER**

<u>CLASS NUMBER</u>	<u>HAY CODE</u>	<u>CLASSIFICATION</u>	<u>AUTHORIZED POSITIONS</u>	<u>APPROVED SALARY RANGE</u>		
				<u>Beginning of Range</u>	<u>Maximum Hiring</u>	<u>Top of Range</u>
3301	M4	Administrator	1.00		(1)	
3304	AS8	Assistant Director of Dietary Services	1.00	13.63	14.99	22.65
3310	SP1	Assistant Director of Nursing	1.00	20.81	22.89	35.89
3315	AS8	Director of Environmental Services	1.00	13.66	15.03	22.75
3325	AS11	Business Manager	1.00	20.29	22.32	33.71
3330	AS8	Director of Activities	1.00	13.63	14.99	22.65
3335	AS10	Director of Dietary Services	1.00	17.70	19.47	29.39
3350	SP3	Director of Nursing	1.00	22.93	25.22	40.15
3360	AS10	Director of Social Services	1.00	17.70	19.47	29.39
3365	-	Director of Special Care Unit	1.00	25.29	27.82	37.34
		<b>TOTAL</b>	<b><u>10.00</u></b>			

(1) Employee's contract is negotiated with the Rehab and Nursing Center Governing Board.

The Nursing Home Manager is an out-sourced contract.

**DEKALB COUNTY GOVERNMENT**

**FY 2011 BUDGET**

**PUBLIC HEALTH DEPARTMENT**

<u>CLASS NUMBER</u>	<u>HAY CODE</u>	<u>CLASSIFICATION</u>	<u>AUTHORIZED POSITIONS*</u>	<u>APPROVED SALARY RANGE</u>		
				<u>Beginning of Range</u>	<u>Maximum Hiring</u>	<u>Top of Range</u>
3501	M3	Administrator	1.00		(1)	
3502	-	Assistant Administrator	1.00	33.24	36.57	53.32
3524	AS9	Communicable Disease Coord.	1.00	23.80	26.18	38.17
3532	AS11	Director of Environmental Health	1.00	23.42	25.76	36.35
3536	AS10	Director of Health Education	1.00	21.66	23.83	33.64
3537	SP1	Director of Home Care	1.00	31.67	34.83	50.78
3539	-	Director of Office Support	1.00	19.43	21.37	30.15
3540	-	Director of Personal Health Svcs.	1.00	31.67	34.83	50.78
3544	AS10	Family Planning Coordinator	1.00	23.80	26.18	38.17
3545	-	Director of Fiscal Operations	1.00	18.32	20.15	28.43
3548	-	HIV/STD Clinical Team Leader	1.00	18.40	20.24	29.45
3549	-	Home Care Office Coordinator	1.00	15.10	16.61	23.44
3555	-	Insurance Case Mgmt. Coord.	1.00	24.14	26.56	37.47
3560	-	Patient Care Coordinator	1.00	26.58	29.23	42.62
3581	-	Pediatric Services Coordinator	1.00	23.80	26.18	38.17
3585	-	Program Development Coord.	1.00	24.99	27.49	40.07
3595	-	WIC/FCM Program Coordinator	1.00	23.80	26.18	38.17
3596	-	WIC/FCM Team Leader	<u>1.00</u>	22.02	24.22	35.31
<b>TOTAL</b>			<b><u>18.00</u></b>			

(1) Administrator's salary is set by the Board of Health.

\*Not all authorized positions are expected to be filled in 2011.

**DEKALB COUNTY GOVERNMENT**

**FY 2011 BUDGET**

**MENTAL HEALTH**

<u>CLASS NUMBER</u>	<u>HAY CODE</u>	<u>CLASSIFICATION</u>	<u>AUTHORIZED POSITIONS</u>	<u>APPROVED SALARY RANGE*</u>		
				<u>Beginning of Range</u>	<u>Maximum Hiring</u>	<u>Top of Range</u>
3701	AS11	Administrator	1.00	21.82	24.00	32.31
3715	-	Administrative Assistant	<u>1.00</u>	16.34	17.97	25.48
		<b>TOTAL</b>	<u>2.00</u>			

\*Salaries are set by the Mental Health Board, using these ranges as a guideline.

**DEKALB COUNTY GOVERNMENT**

**FY 2011 BUDGET**

**NONUNION COURT SERVICES**

**MANAGEMENT**

<u>CLASS NUMBER</u>	<u>HAY CODE</u>	<u>CLASSIFICATION</u>	<u>AUTHORIZED POSITIONS</u>	<u>APPROVED SALARY RANGE</u>		
				<u>Beginning of Range</u>	<u>Maximum Hiring</u>	<u>Top of Range</u>
4110	CSA10	Deputy Director*	1.00	50,410	55,451	74,868
4125	CSA9	Supervisor - Juvenile *	<u>1.00</u>	45,201	49,721	66,826
<b>TOTAL</b>			<u>2.00</u>			

**CLERICAL**

<u>CLASS NUMBER</u>	<u>HAY CODE</u>	<u>CLASSIFICATION</u>	<u>AUTHORIZED POSITIONS</u>	<u>APPROVED SALARY RANGE</u>		
				<u>Beginning of Range</u>	<u>Maximum Hiring</u>	<u>Top of Range</u>
4280	CT6	Admin. Clerk C	1.00	11.15	12.26	17.36
4270	CS4	Secretary A	<u>1.00</u>	12.25	13.47	20.04
<b>TOTAL</b>			<u>2.00</u>			

\*Salaries are set by the Sixteenth Judicial Circuit.

**DEKALB COUNTY GOVERNMENT**

**FY 2011 BUDGET**

**VETERANS' ASSISTANCE COMMISSION**

<u>CLASS NUMBER</u>	<u>HAY CODE</u>	<u>CLASSIFICATION</u>	<u>AUTHORIZED POSITIONS</u>	<u>APPROVED SALARY RANGE</u>		
				<u>Beginning of Range</u>	<u>Maximum Hiring</u>	<u>Top of Range</u>
4662	CT5	Driver	1.00	10.29	11.32	16.05
4661	CT9	Executive Secretary	1.00	14.74	16.21	22.95
4663	AS9	Service Officer	2.00	17.60	19.35	27.41
4601	AS11	Superintendent	<u>1.00</u>	21.63	23.80	32.50
		TOTAL	<u>5.00</u>			



**DEKALB COUNTY GOVERNMENT**

**FY 2011 BUDGET**

**MAP UNION**

<u>CLASS NUMBER</u>	<u>HAY CODE</u>	<u>CLASSIFICATION</u>	<u>AUTHORIZED POSITIONS</u>
5105	FP8	Communications Sergeant	5.00
5110	FP6	Communications	19.00
5115	FP10	Corrections Sergeant	5.00
5120	FP8	Corrections - Detention Center	18.00
5120	FP8	Corrections - Courthouse Security	4.00
5125	FP11	Detective Sergeant	1.00
5130	FP8	Detective	6.00
5135	FP10	Patrol Sergeant	5.00
5140	FP8	Patrol	26.00
<b>TOTAL</b>			<b><u>89.00</u></b>

	<u>COMMUNICATIONS</u>	<u>CORRECTIONS</u>	<u>DETECTIVE</u>	<u>PATROL</u>
<b>DEPUTY</b>				
After Years Completed	0	18.05	21.54	22.16
(as of January 1	1	19.41	23.10	23.95
or July 1)	2	20.76	24.71	25.71
	3	22.13	26.28	27.44
	4	23.45	27.96	29.24
	5	24.51	29.20	31.06
	6	25.60	30.48	-----
	7	28.57	-----	-----
<b>SERGEANT</b>	0	28.77	32.93	33.57
After Years Completed	1	29.64	33.97	34.61
(as of January 1	2	30.47	34.93	35.60
or July 1)				

**DDEKALB COUNTY GOVERNMENT**

**FY 2011 BUDGET**

**OPERATING ENGINEERS UNION**

<u>CLASS NUMBER</u>	<u>HAY CODE</u>	<u>CLASSIFICATION</u>	<u>AUTHORIZED POSITIONS</u>	<u>2010 APPROVED RATE</u>
5305	-	Highway Maintainer	9.00	25.94
5310	-	Maintenance-Highway	1.00	20.80
5330	-	Mechanic	2.00	26.44
5330	-	Traffic Control Technician	<u>2.00</u>	26.44
		<b>TOTAL</b>	<u>14.00</u>	

Employees receive 80% of the beginning salary for the first 12 months of employment, 90% for the second 12 months, and 100% at the beginning of the third year.

**The contract beginning 12/01/2010 was under negotiation at the time of printing.**

**DEKALB COUNTY GOVERNMENT**

**FY 2011 BUDGET**

**AFSCME UNION  
SYCAMORE & HIGHWAY CAMPUSES**

APPROVED  
SALARY RANGE

<u>CLASS NUMBER</u>	<u>CLASSIFICATION</u>	<u>HAY CODE</u>	<u>AUTHORIZED POSITIONS</u>	<u>Beginning of Range</u>	<u>Maximum Hiring</u>	<u>Top of Range</u>
5505	Accounting Clerk A	AC7A	2.00	13.54	14.89	21.44
5506	Accounting Clerk B	AC6	0.00	10.89	11.98	17.25
5507	Administrative Assistant	AC7A	1.00	13.54	14.89	21.44
5509	Administrative Clerk A	AC8	1.00	12.96	14.26	20.50
5510	Administrative Clerk B	AC7	2.00	11.83	13.01	18.73
5511	Administrative Clerk C	AC6	6.00	10.89	11.98	17.25
5515	Administrative Secretary	AC8	2.00	12.96	14.26	20.50
5519	Assistant Planner	AA9	1.00	17.20	18.92	27.21
5520	Cartographer (unfunded)	AA8	0.00	15.12	16.63	23.94
5523	Chief Deputy of Assessments	AA9	1.00	17.20	18.92	27.21
5524	Chief Deputy of Elections	AA8	1.00	15.12	16.63	23.94
5527	Chief Deputy Recorder	AA9	1.00	17.20	18.92	27.21
5530	Chief Deputy Treasurer	AA9	1.00	17.20	18.92	27.21
5531	Clerk/Typist (unfunded)	AC3	0.00	8.82	9.70	13.98
5580	Code Enforcement Tech.	AA8	1.00	15.12	16.63	23.94
5542	Engineering Tech II (unfunded)	AL10B	0.00	13.84	15.22	21.93
5543	Engineering Technician III	AL11	3.00	16.75	18.43	26.53
5555	Gen Maintenance	AL9A	1.00	12.41	13.65	19.64
5553	GIS Technician (unfunded)	AA8	0.00	15.12	16.63	23.94
5549	Housekeeper/Custodian II (unfunded)	AC4	0.00	8.55	9.41	13.29
5551	Legal Secretary B	AC7	7.00	11.83	13.01	18.73
5556	Maintenance II	AL10B	3.00	13.84	15.22	21.93
5557	Maintenance III	AL10A	1.00	15.38	16.92	24.34
5560	Maintenance Supervisor	AL12	1.00	16.91	18.60	26.76
5563	Mapper - Appraiser I	AA7	1.00	13.44	14.78	21.28
5564	Mapper - Appraiser II	AA8	1.00	15.12	16.63	23.94
5567	Office Assistant A	AC5	3.00	10.05	11.06	15.91
5568	Office Assistant B	AC4	5.00	9.40	10.34	14.90
5571	Office Coordinator	AC9	0.00	14.32	15.75	22.65
5574	Offset Printer	AA4	1.00	9.69	10.66	15.36
5575	Permit & Inventory Tech III	AL11	1.00	16.75	18.43	26.53
5583	Secretary B	AC6	4.50	10.89	11.98	17.25
5585	Tax Extension Clerk	AA8	1.00	15.12	16.63	23.94
5589	Victim/Witness Assistant	AA7	<u>1.00</u>	13.44	14.78	21.28
	<b>TOTAL</b>		<b><u>54.50</u></b>			

**DEKALB COUNTY GOVERNMENT**

**FY 2011 BUDGET**

**AFSCME UNION  
PUBLIC HEALTH DEPARTMENT**

<u>CLASS NUMBER</u>	<u>HAY CODE</u>	<u>CLASSIFICATION</u>	<u>AUTHORIZED POSITIONS*</u>	<u>APPROVED SALARY RANGE</u>		
				<u>Beginning of Range</u>	<u>Maximum Hiring</u>	<u>Top of Range</u>
5603	-	Accounting Assistant	1.00	13.60	14.96	20.65
5604	CT7A	Accounting Clerk A	3.00	15.26	16.79	23.23
5608	CT6	Administrative Clerk C	2.00	11.94	13.13	18.17
5612	LT7A	Animal Control Officer	2.00	13.89	15.27	21.14
5620	-	Case Manager	2.00	14.27	15.69	21.73
5647	-	Health Educator	1.50	18.00	19.80	27.38
5648	AS6	Hearing & Vision Technician	0.50	12.98	14.28	19.76
5683	-	HIV Prevention Specialist	1.00	16.68	18.34	25.38
5622	-	Home Care Administrative Asst	1.00	15.26	16.79	23.23
5656	AS4	Home Health - CNA	3.00	11.03	12.13	16.79
5657	-	Home Health - RN	12.00	22.47	24.71	35.33
5660	-	Licensed Env Hlth Practitioner	1.00	19.68	21.64	28.46
5688	AS8	LEHP in Training/Sanitarian	2.00	18.24	20.06	27.78
5668	AS7	Nutritionist	2.50	18.00	19.80	27.38
5672	CT4	Office Assistant B	1.50	10.56	11.62	16.09
5682	-	Public Health Associate	1.00	14.75	16.23	22.46
5684	AS9	Public Health Nurse	10.00	20.45	22.50	32.17
5686	-	Quality Improvement Assistant	1.00	15.27	16.79	23.23
5625	CT6	Secretary/Case Manager Asst	1.00	11.94	13.13	18.17
5626	CT6	Secretary/Clinic Aide	1.00	11.94	13.13	18.17
5693	CT6	Secretary B	10.00	11.94	13.13	18.17
5689	-	Senior Biller	<u>1.00</u>	15.25	16.78	22.21
<b>TOTAL</b>			<b><u>61.00</u></b>			

\*Not all authorized positions are expected to be filled in 2011.

**DEKALB COUNTY GOVERNMENT**

**FY 2011 BUDGET**

**AFSCME UNION  
REHAB AND NURSING CENTER**

<u>CLASS NUMBER</u>	<u>HAY CODE</u>	<u>CLASSIFICATION</u>	<u>AUTHORIZED POSITIONS</u>	<u>APPROVED SALARY RANGE</u>		
				<u>Beginning of Range</u>	<u>Maximum Hiring</u>	<u>Top of Range</u>
5910	NS3	Activity Aide	7.75	8.30	9.13	12.84
5918	NL9B	Cook II	3.60	9.43	10.37	14.70
5922	NL3	Dietary Aide	18.00	8.25	8.80	11.53
5930	NL3	Housekeeping Aide	9.00	8.25	8.80	11.53
5935	NL3	Laundry Worker I	4.00	8.25	8.80	11.53
5917	-	Lead Cook	1.00	10.88	11.97	16.03
5919	-	Lead Housekeeper	1.00	8.27	9.10	13.75
5939	NL8	Maintenance I	1.00	10.70	11.77	16.77
5946	LT12	Maintenance Supervisor	1.00	15.51	17.06	24.97
5951	-	Nurse's Assistant - CNA	68.00	11.23	12.35	16.10
5963	NC4	Receptionist	2.00	8.91	9.80	13.88
5969	NS4	Restorative Aide	4.00	11.44	12.58	16.62
5986	-	Staff Nurse - LPN	6.10	16.97	18.67	23.28
5993	-	Unit Clerk	1.00	11.17	12.29	14.91
5994	-	Unit Assistant	3.50	8.68	9.55	13.11
5995	NC6	Ward Secretary	<u>2.00</u>	12.04	13.24	17.21
		<b>TOTAL</b>	<u>132.95</u>			

**The contract beginning 01/01/2011 was under negotiation at the time of printing.**

**DEKALB COUNTY GOVERNMENT**

**FY 2011 BUDGET**

**TEAMSTERS UNION**

<u>CLASS NUMBER</u>	<u>HAY CODE</u>	<u>CLASSIFICATION</u>	<u>POSITIONS</u>
6710	TP9	Comm. Restitution Service Coord.	1.00
6720	TP9	Probation Officer - Adult	6.00
6730	TP9	Probation Officer - Juvenile	<u>6.00</u>
		<b>TOTAL</b>	<b><u>13.00</u></b>

	2010 <u>Approved Salary Range</u>	
	<u>Hourly*</u>	<u>Annual</u>
Probation Officers	17.52 - 25.77	34,172 - 50,259
Special Unit Officers	18.84 - 27.76	36,749 - 54,123

\*Hourly rate is based on 7.5 hours/day; 1,950 hours/year.

**The contract beginning 12/01/2010 was under negotiation at the time of printing.**

**DEKALB COUNTY GOVERNMENT**

**FY 2011 BUDGET**

**FOREST PRESERVE**

<u>CLASS NUMBER</u>	<u>HAY CODE</u>	<u>CLASSIFICATION</u>	<u>AUTHORIZED POSITIONS</u>	<u>APPROVED SALARY RANGE</u>		
				<u>Beginning of Range</u>	<u>Maximum Hiring</u>	<u>Top of Range</u>
7105	LT8C	Park Manager-Part Time	1.50	9.71	10.68	13.73
7106	-	Park Manager	1.00	14.53	15.98	23.01
7130	-	Natural Resource Manager	0.66		20.40	
7110	-	Maintenance - Part Time	0.85	7.32	8.05	12.46
7115	LT12A	Maintenance Supervisor	1.00	17.70	19.47	28.48
7120	-	Secretary - Financial Support *	0.00		69.12	monthly
7120	-	Secretary - Office*	0.00		11.67	hourly
7120	-	Secretary - Office*	0.00		58.07	monthly
7125		Secretary - Parks* (telephone reimbursement for prk mgrs phone)	<u>0.00</u>		25.00	monthly
<b>TOTAL</b>			<u>5.01</u>			

The Forest Preserve Superintendent appears on the exempt schedule.

\*Rates set by the Forest Preserve Superintendent.

Full-time Forest Preserve employees are on the same pay and longevity plan as other non-union county employees.

**DEKALB COUNTY GOVERNMENT**

**FY 2011 BUDGET**

**TEMPORARY EMPLOYEES**

1. Hourly rates for temporary employees and students are at the discretion of the department heads as long as they stay within their approved salary budget.
2. Temporary employees and students are not eligible for holiday pay, PHO accruals, or any other benefits.
3. Base pay for election judges will be \$90.00 per election, with an additional \$40.00 paid to those who have attended the training course.



**DEKALB COUNTY GOVERNMENT**

**FY 2011 BUDGET**

**NONUNION LONGEVITY PLAN**

<b>Hired Before Jan. 1st</b>	<b>Full Years of Service</b>	<b>Pay Period Amount</b>	<b>Annual Amount</b>
2011	0	0.00	0.00
2010	1	0.00	0.00
2009	2	0.00	0.00
2008	3	0.00	0.00
2007	4	0.00	0.00
2006	5	14.00	364.00
2005	6	17.00	442.00
2004	7	19.00	494.00
2003	8	22.00	572.00
2002	9	24.00	624.00
2001	10	27.00	702.00
2000	11	40.00	1,040.00
1999	12	44.00	1,144.00
1998	13	47.00	1,222.00
1997	14	51.00	1,326.00
1996	15	54.00	1,404.00
1995	16	58.00	1,508.00
1994	17	61.00	1,586.00
1993	18	65.00	1,690.00
1992	19	68.00	1,768.00
1991	20	72.00	1,872.00
1990	21	95.00	2,470.00
1989	22	99.00	2,574.00
1988	23	102.00	2,652.00
1987	24	106.00	2,756.00
1986	25	109.00	2,834.00
1985	26	123.00	3,198.00
1984	27	126.00	3,276.00
1983	28	130.00	3,380.00
1982	29	133.00	3,458.00
1981	30 or more	137.00	3,562.00

Pay period amounts reflect 26 pay periods per year.

This program is for non-union employees who are not in departments with separate governing boards (unless specifically adopted by the appropriate board). Employees of elected officials will qualify if the elected official has chosen to implement the program.

If an employee works the required hours to be in an insurance eligible position, 100% of longevity is paid; if 20 hours or less are worked in a pay period, no longevity is paid; otherwise 50% is paid.

**DEKALB COUNTY GOVERNMENT**

**FY 2011 BUDGET**

**AFSCME UNION LONGEVITY PLAN  
SYCAMORE & HIGHWAY CAMPUSES**

<u>Hired Before June 1st</u>	<u>Full Years of Service</u>	<u>Pay Period Amount</u>	<u>Annual Amount</u>
2011	0	0.00	0.00
2010	1	0.00	0.00
2009	2	0.00	0.00
2008	3	0.00	0.00
2007	4	13.54	352.00
2006	5	15.35	399.00
2005	6	18.16	472.00
2004	7	19.97	519.00
2003	8	22.77	592.00
2002	9	24.58	639.00
2001	10	27.39	712.00
2000	11	29.20	759.00
1999	12	32.00	832.00
1998	13	33.81	879.00
1997	14	36.62	952.00
1996	15	38.43	999.00
1995	16	41.24	1,072.00
1994	17	43.04	1,119.00
1993	18	45.85	1,192.00
1992	19	47.66	1,239.00
1991	20	50.47	1,312.00
1990	21	62.27	1,619.00
1989	22	65.08	1,692.00
1988	23	66.89	1,739.00
1987	24	69.70	1,812.00
1986	25	71.50	1,859.00
1985	26	74.31	1,932.00
1984	27	76.12	1,979.00
1983	28	78.93	2,052.00
1982	29	80.74	2,099.00
1981	30	83.54	2,172.00
1980	31	85.35	2,219.00
1979	32	88.16	2,292.00
1978	33	89.97	2,339.00
1977	34	92.77	2,412.00
1976	35 or more	94.58	2,459.00

Pay period amounts reflect 26 pay periods per year.

If an employee works the required hours to be in an insurance eligible position, 100% of longevity is paid; if 20 hours or less are worked in a pay period, no longevity is paid; otherwise 50% is paid.

**DEKALB COUNTY GOVERNMENT**

**FY 2011 BUDGET**

**MAP UNION LONGEVITY PLAN**

<u>Hired Before Jan 1st</u>	<u>Full Years of Service</u>	<u>Pay Period Amount</u>	<u>Annual Amount</u>
2011	0	0.00	0.00
2010	1	0.00	0.00
2009	2	0.00	0.00
2008	3	0.00	0.00
2007	4	0.00	0.00
2006	5	0.00	0.00
2005	6	0.00	0.00
2004	7	0.00	0.00
2003	8	25.39	660.00
2002	9	30.00	780.00
2001	10	34.62	900.00
2000	11	39.24	1,020.00
1999	12	43.85	1,140.00
1998	13	48.47	1,260.00
1997	14	53.08	1,380.00
1996	15	57.70	1,500.00
1995	16	62.31	1,620.00
1994	17	66.93	1,740.00
1993	18	71.54	1,860.00
1992	19	76.16	1,980.00
1991	20	80.77	2,100.00
1990	21	85.39	2,220.00
1989	22	90.00	2,340.00
1988	23	94.62	2,460.00
1987	24	99.24	2,580.00
1986	25 or more	103.85	2,700.00

For purposes of calculating longevity only, "full years of service" is defined as the number of entire years the employee has worked full time in a merited deputy position in the DeKalb County Sheriff's Office.

Pay period amounts reflect 26 pay periods per year.

**DEKALB COUNTY GOVERNMENT**

**FY 2011 BUDGET**

**PAID HOURS OFF PROGRAM**

(to be used for vacation, sick days, & holidays)

		<u>Accrual Rate*</u>	<u>Equivalent Days Off</u>	<u>Maximum Accrual</u>	<u>Maximum Emergency Accrual</u>	<u>Maximum Paid at Termination</u>
A. All Groups, except C, D and E Hired After 11/30/2005	0.5-4	0.1077	28.0	60 days	15 days	60 days
	5-8	0.1270	33.0	60 days	15 days	60 days
	9-14	0.1443	37.5	60 days	15 days	60 days
	15+	0.1616	42.0	60 days	15 days	60 days
B. All Groups, except C, D and E Hired Before 12/01/2005	0.5-4	0.1270	33.0	60 days	15 days	60 days
	5-14	0.1443	37.5	60 days	15 days	60 days
	15+	0.1616	42.0	60 days	15 days	60 days
C. Nursing Home - all	0.5-2	0.0885	23.0	465 hrs	N/A	465 hrs
	3-7	0.1077	28.0	465 hrs	N/A	465 hrs
	8-15	0.1270	33.0	465 hrs	N/A	465 hrs
	16+	0.1443	37.5	465 hrs	N/A	465 hrs
D. AFSCME Union (Non-Nursing Home)	0.5-4	0.1270	33.0	60 days	15 days	60 days
	5-14	0.1443	37.5	60 days	15 days	60 days
	15+	0.1616	42.0	60 days	15 days	60 days
E. MAP Union	0.5-4	0.1120	29.0	600 hrs	N/A	600 hrs
	5-14	0.1290	33.5	600 hrs	N/A	600 hrs
	15+	0.1460	38.0	600 hrs	N/A	600 hrs

\*PHO's are accrued on non-overtime hours paid, excluding funeral leave and jury duty pay.

Part-time employees in Group A will be eligible to earn PHO's only if their position is budgeted at 50% or more of the position's full-time hours per week.

**DEKALB COUNTY GOVERNMENT**

**FY 2011 BUDGET**

**HOLIDAY SCHEDULES**

	All Groups				
	Except Those	Health		Nursing	Mental
	at Right	Dept	MAP	Home	Health
New Year's Day	X	X	X	X	X
Martin Luther King, Jr. Day	X	X			X
Lincoln's Birthday	X	floating			X
President's Day		X	X		
Washington's Birthday	X				X
Spring Holiday/Good Friday	X	1/2	X		X
Easter			X	X	
Memorial Day	X	X	X	X	X
Independence Day	X	X	X	X	X
Labor Day	X	X	X	X	X
Columbus Day	X	X	X		X
Veterans' Day	X	X	X		X
Thanksgiving Day	X	X	X	X	X
Day after Thanksgiving	X	X	X	X	
Christmas Eve		1/2	X	X	1/2
Christmas Day	X	X	X	X	X
New Year's Eve Day		1/2	X		
To Be Determined			-1		

<b>Total Holidays in 2011</b>	<b>13.00</b>	<b>13.50</b>	<b>13.00</b>	<b>9.00</b>	<b>12.50</b>
-------------------------------	--------------	--------------	--------------	-------------	--------------

Total Holidays in 2010	14.00	13.50	14.00	9.00	12.50
Total Holidays in 2009	14.00	13.50	14.00	9.00	12.50
Total Holidays in 2008	14.00	13.50	14.00	9.00	12.50
Total Holidays in 2007	14.00	13.50	14.00	9.00	9.00
Total Holidays in 2006	14.00	12.50	14.00	9.00	9.00
Total Holidays in 2005	12.00	12.50	12.00	9.00	9.00
Total Holidays in 2004	14.00	13.50	14.00	9.00	9.00
Total Holidays in 2003	14.00	13.50	14.00	9.00	9.00
Total Holidays in 2002	14.50	13.50	14.00	9.00	9.00
Total Holidays in 2001	14.00	13.50	14.00	9.00	9.00
Total Holidays in 2000	14.00	12.50	14.00	9.00	9.00

# DEKALB COUNTY GOVERNMENT

## FY 2011 BUDGET

### MISCELLANEOUS INFORMATION

#### 1. IMRF HOURLY STANDARD

Prior to December 1, 1993 employees working 600 hours or more per year were eligible for IMRF. On December 1, 1993 the hourly standard changed to 1,000 hours or more per year.

#### 2. EARLY RETIREMENT INCENTIVE

The County Board voted to offer the Early Retirement Incentive program through IMRF effective from March 1, 1996 through February 28, 1997.

#### 3. SLEP EMPLOYEE RATE

The SLEP employee rate changed from 6.5% to 7.5% on June 1, 2006.

#### 4. IMRF/FLEX RESOLUTION

The resolution to make flexible spending deductions subject to IMRF/SLEP was effective January 1, 2007.

#### 5. IMRF/MILITARY SERVICE CREDIT RESOLUTION

The resolution to allow the purchase of up to 48 months of military service for IMRF service credit was passed on February 20, 2008.

#### 6. COBRA ADMINISTRATIVE FEE

A 2% administrative fee for processing COBRA insurance premiums was approved by the County Board effective March 1, 1987.

#### 7. FLEXIBLE BENEFITS PROGRAM

The first Flexible Benefits Plan Document was effective on January 1, 1990; restated as of January 1, 2003; and last amended (amendment #3) on July 21, 2010. The Reimbursement Plan Administrator changed from Ceridian to Pay Flex on January 1, 2011.

#### 8. FISCAL YEAR CHANGE

The fiscal year was changed to be a calendar year with the FY2008 budget effective January 1, 2008. This caused FY2007 to be 13 months long and run from December 1, 2006 through December 31, 2007.

#### 9. PHO BUY-DOWN

Effective with the FY2008 budget, the nonunion PHO program was amended to offer the option of buying down PHO hours over 200 to employees with five or more years of service whose PHO's are tracked by the Finance Office. This option was offered in FY2008 and FY2009 but was eliminated in FY2010.

**DEKALB COUNTY GOVERNMENT**

**FY 2011 BUDGET**

**MISCELLANEOUS INFORMATION**

**(continued)**

**10. DEPARTMENT ADJUSTMENT**

Effective with FY2008 (01/01/2008) Facilities Management Office became a part of the General Fund.

**11. MINIMUM WAGE**

- A. The federal minimum wage was \$5.85/hour, effective July 24, 2007. It was raised to \$6.55/hour on July 24, 2008 and to \$7.25/hour on July 24, 2009.
- B. The state minimum wage was \$7.50/hour, effective July 1, 2007. It was raised to \$7.75/hour on July 1, 2008; to \$8.00/hour on July 1, 2009; and to \$8.25/hour on July 1, 2010.
- C. When the federal and state minimum wage differ, the higher rate is used.

**12. Deferred Compensation Limits**

<u>Year</u>	<u>Maximum Deferral</u>	<u>Year</u>	<u>Maximum Deferral</u>
2002	11,000	2007	15,500
2003	12,000	2008	15,500
2004	13,000	2009	16,500
2005	14,000	2010	16,500
2006	15,000	2011	16,500

**13. NONUNION LONGEVITY PLAN**

The nonunion longevity plan was adopted November 17, 1999; and amended on January 1, 2008 and January 1, 2009.

**14. UNEMPLOYMENT BENEFITS**

The county began self-insuring for unemployment benefits on January 1, 2006. (This does not apply to the Forest Preserve.)

**15. PUBLIC DEFENDER SALARY**

The resolution setting the Public Defender's salary at 90% of the State's Attorney's salary was passed by the County Board on March 21, 2007.

**DEKALB COUNTY GOVERNMENT**

**FY 2011 BUDGET**

**NONUNION SALARY INCREASE HISTORY**

<u>YEAR</u>	<u>COLA</u>	<u>MERIT</u>
FY 2011	0.00%*	0.00%
FY 2010	0.10%	0-1.9%
FY 2009	2.00%	0-2%
FY 2008	2.50%	0-1.5%
FY 2007	3.40%	0-2%
FY 2006	3.30%	0-2%
FY 2005	1.90%	0-2%
FY 2004	2.40%	0-2%
FY 2003	1.60%	1.40%
FY 2002	3.40%	0-2%
FY 2001	2.70%	0-3%
FY 2000	1.60%	0-3%
FY 1999	2.00%	0-3%
FY 1998	2.20%	0-3%
FY 1997	3.00%	0-3%
FY 1996	3.00%	0-3%
FY 1995	3.00%	0-3%

\*potential 1.3% in fourth quarter



**DEKALB COUNTY GOVERNMENT**

**FY 2011 BUDGET**

**IMRF/SLEP EMPLOYER RATE HISTORY**

<u>CALENDAR YEAR</u>	<u>IMRF ACTUAL RATE</u>	<u>IMRF PHASE-IN RATE</u>	<u>IMRF DEPT W/H RATE</u>	<u>SLEP ACTUAL RATE</u>	<u>SLEP PHASE-IN RATE</u>	<u>SLEP DEPT W/H RATE</u>
2011	11.25%	10.47%	9.50%	21.23%	21.19%	21.23%
2010	11.06%	9.52%	9.00%	21.56%	19.56%	19.56%
2009	8.65%	N/A	8.50%	18.17%	N/A	18.17%
2008	8.59%	N/A	8.00%	17.81%	N/A	17.81%
2007	8.79%	N/A	7.50%	17.44%	N/A	17.44%
2006	9.40%	N/A	7.00%	16.89%	N/A	16.89%
2005	8.43%	N/A	6.50%	16.52%	N/A	16.52%
2004	.95%	N/A	6.00%	14.54%	N/A	14.54%
2003	.91%	N/A	6.00%	12.94%	N/A	12.94%
2002	6.00%	N/A	6.00%	13.13%	N/A	13.13%
2001	6.00%	N/A	6.00%	14.95%	N/A	14.95%
2000	6.84%	N/A	6.84%	13.93%	N/A	13.93%

<u>CALENDAR YEAR</u>	<u>FOREST PRESERVE ACTUAL RATE</u>	<u>FOREST PRESERVE PHASE-IN RATE</u>	<u>FOREST PRESERVE DEPT W/H RATE</u>
2011	15.27%	N/A	15.27%
2010	16.00%	14.61%	14.61%
2009	13.28%	N/A	13.28%
2008	12.94%	N/A	12.94%
2007	12.52%	N/A	12.52%
2006	14.73%	N/A	14.73%
2005	12.50%	N/A	12.50%
2004	11.98%	N/A	11.98%
2003	9.44%	N/A	9.44%
2002	8.87%	N/A	8.87%
2001	9.00%	N/A	9.00%
2000	9.27%	N/A	9.27%

**DEKALB COUNTY GOVERNMENT**

**FY 2011 BUDGET**

**EARNINGS STATISTICS**

<u>Calendar Year</u>	<u>Gross Earnings</u>	<u>FICA Earnings</u>	<u>Medicare Earnings</u>	<u>Fed/State Earnings</u>	<u>IMRF Earnings</u>	<u>SLEP Earnings</u>
<u>2009</u>						
County	25,983,808	24,536,472	24,755,720	22,891,143	18,035,979	6,452,786
Forest Prsv	307,735	298,315	298,315	254,407	269,221	0
Total	<u>26,291,542</u>	<u>24,834,786</u>	<u>25,054,035</u>	<u>23,145,550</u>	<u>18,305,200</u>	<u>6,452,786</u>
<u>2008</u>						
County	24,834,814	23,418,050	23,654,331	21,819,481	17,232,771	6,053,130
Forest Prsv	277,962	265,742	265,742	226,564	252,510	0
Total	<u>25,112,776</u>	<u>23,683,792</u>	<u>23,920,073</u>	<u>22,046,045</u>	<u>17,485,281</u>	<u>6,053,130</u>
<u>2007</u>						
County	23,260,027	21,987,667	22,126,712	20,441,360	16,349,624	5,579,531
Forest Prsv	246,578	234,586	234,586	197,419	225,925	0
Total	<u>23,506,605</u>	<u>22,222,253</u>	<u>22,361,298</u>	<u>20,638,779</u>	<u>16,575,549</u>	<u>5,579,531</u>
<u>2006</u>						
County	21,759,049	20,581,556	20,725,636	19,255,733	14,540,098	4,840,195
Forest Prsv	227,839	216,809	216,809	182,006	205,712	0
Total	<u>21,986,888</u>	<u>20,798,365</u>	<u>20,942,445</u>	<u>19,437,739</u>	<u>14,745,810</u>	<u>4,840,195</u>
<u>2005</u>						
County	20,697,814	19,618,588	19,734,328	18,417,639	13,777,555	4,576,347
Forest Prsv	222,683	212,227	212,227	188,867	194,931	0
Total	<u>20,920,497</u>	<u>19,830,815</u>	<u>19,946,555</u>	<u>18,606,506</u>	<u>13,972,486</u>	<u>4,576,347</u>
<u>2004</u>						
County	20,298,133	19,358,981	19,496,101	18,207,428	13,754,822	4,472,513
Forest Prsv	251,670	223,817	223,817	203,851	208,269	0
Total	<u>20,549,803</u>	<u>19,582,798</u>	<u>19,719,918</u>	<u>18,411,279</u>	<u>13,963,091</u>	<u>4,472,513</u>
<u>2003</u>						
County	18,619,557	17,766,053	17,852,464	16,635,401	12,464,009	4,310,227
Forest Prsv	215,941	208,069	208,069	189,529	195,157	0
Total	<u>18,835,498</u>	<u>17,974,122</u>	<u>18,060,533</u>	<u>16,824,930</u>	<u>12,659,166</u>	<u>4,310,227</u>
<u>2002</u>						
County	17,198,206	16,461,720	16,542,073	15,407,856	11,001,119	3,647,460
Forest Prsv	212,072	205,224	205,224	205,224	192,132	0
Total	<u>17,410,278</u>	<u>16,666,944</u>	<u>16,747,297</u>	<u>15,613,080</u>	<u>11,193,251</u>	<u>3,647,460</u>

**DEKALB COUNTY GOVERNMENT**

**FY 2011 BUDGET**

**PAYROLL STATISTICS**

<u>Calendar Year</u>	<u>Checks Last Cycle</u>	<u>W-2's Issued</u>	<u>Annual Employees Hired</u>	<u>Annual Employees Terminated</u>	<u>Employees on Payroll Last Cycle</u>
<b><u>2009</u></b>					
County	676	882	185	157	703
Forest Prsv	<u>8</u>	<u>13</u>	<u>1</u>	<u>1</u>	<u>13</u>
Total	<u><u>684</u></u>	<u><u>895</u></u>	<u><u>186</u></u>	<u><u>158</u></u>	<u><u>716</u></u>
<b><u>2008</u></b>					
County	650	900	239	214	675
Forest Prsv	<u>6</u>	<u>13</u>	<u>1</u>	<u>3</u>	<u>13</u>
Total	<u><u>656</u></u>	<u><u>913</u></u>	<u><u>240</u></u>	<u><u>217</u></u>	<u><u>688</u></u>
<b><u>2007</u></b>					
County	632	889	242	224	650
Forest Prsv	<u>6</u>	<u>14</u>	<u>2</u>	<u>3</u>	<u>15</u>
Total	<u><u>638</u></u>	<u><u>903</u></u>	<u><u>244</u></u>	<u><u>227</u></u>	<u><u>665</u></u>
<b><u>2006</u></b>					
County	635	859	207	204	632
Forest Prsv	<u>5</u>	<u>11</u>	<u>1</u>	<u>0</u>	<u>16</u>
Total	<u><u>640</u></u>	<u><u>870</u></u>	<u><u>208</u></u>	<u><u>204</u></u>	<u><u>648</u></u>
<b><u>2005</u></b>					
County	613	853	202	203	629
Forest Prsv	<u>5</u>	<u>12</u>	<u>1</u>	<u>0</u>	<u>15</u>
Total	<u><u>618</u></u>	<u><u>865</u></u>	<u><u>203</u></u>	<u><u>203</u></u>	<u><u>644</u></u>
<b><u>2004</u></b>					
County	633	826	201	183	630
Forest Prsv	<u>5</u>	<u>13</u>	<u>3</u>	<u>5</u>	<u>14</u>
Total	<u><u>638</u></u>	<u><u>839</u></u>	<u><u>204</u></u>	<u><u>188</u></u>	<u><u>644</u></u>
<b><u>2003</u></b>					
County		805	166	165	612
Forest Prsv		<u>10</u>	<u>3</u>	<u>0</u>	<u>16</u>
Total	N/A	<u><u>815</u></u>	<u><u>169</u></u>	<u><u>165</u></u>	<u><u>628</u></u>
<b><u>2002</u></b>					
County		813	207	191	611
Forest Prsv		<u>11</u>	<u>1</u>	<u>0</u>	<u>13</u>
Total	N/A	<u><u>824</u></u>	<u><u>208</u></u>	<u><u>191</u></u>	<u><u>624</u></u>

**DEKALB COUNTY GOVERNMENT**

**FY 2011 BUDGET**

**UNEMPLOYMENT STATISTICS**

	<u>Unemp Earnings</u>	<u>Unemp Tax Rate</u>	<u>Unemp Tax Pd</u>	<u>Unemp Wage Base</u>	<u>Min Unemp Tax Rate</u>
<b><u>2009</u></b>					
County	N/A*	N/A*	N/A*	N/A*	N/A*
Forest Preserve	<u>307,735</u>	0.6%	<u>594</u>	12,300	0.6%
Total	<u><u>307,735</u></u>		<u><u>594</u></u>		
<b><u>2008</u></b>					
County	N/A*	N/A*	N/A*	N/A*	N/A*
Forest Preserve	<u>277,962</u>	0.8%	<u>651</u>	12,000	0.8%
Total	<u><u>277,962</u></u>		<u><u>651</u></u>		
<b><u>2007</u></b>					
County	N/A*	N/A*	N/A*	N/A*	N/A*
Forest Preserve	<u>246,578</u>	1.0%	<u>754</u>	11,500	1.0%
Total	<u><u>246,578</u></u>		<u><u>754</u></u>		
<b><u>2006</u></b>					
County	N/A*	N/A*	N/A*	N/A*	N/A*
Forest Preserve	<u>227,389</u>	1.1%	<u>697</u>	11,000	1.1%
Total	<u><u>227,389</u></u>		<u><u>697</u></u>		
<b><u>2005</u></b>					
County	20,100,959	1.6%	106,029	10,500	1.2%
Forest Preserve	<u>222,685</u>	1.2%	<u>813</u>	10,500	1.2%
Total	<u><u>20,323,644</u></u>		<u><u>106,842</u></u>		
<b><u>2004</u></b>					
County	19,731,912	1.3%	79,688	9,800	0.9%
Forest Preserve	<u>220,807</u>	0.9%	<u>601</u>	9,800	0.9%
Total	<u><u>19,952,719</u></u>		<u><u>80,289</u></u>		
<b><u>2003</u></b>					
County	18,069,181	0.9%	49,280	9,000	0.6%
Forest Preserve	<u>215,941</u>	0.6%	<u>341</u>	9,000	0.6%
Total	<u><u>18,285,122</u></u>		<u><u>49,621</u></u>		
<b><u>2002</u></b>					
County	16,712,505	0.9%	47,400	9,000	0.6%
Forest Preserve	<u>212,633</u>	0.6%	<u>351</u>	9,000	0.6%
Total	<u><u>16,925,138</u></u>		<u><u>47,751</u></u>		

\*These statistics do not apply to the county due to the county becoming self-insured for unemployment benefits beginning in 2006.

Election payroll is not subject to unemployment tax.

**DEKALB COUNTY GOVERNMENT**

**FY 2011 BUDGET**

**FLEXIBLE BENEFITS STATISTICS**

**A. UNCOVERED MEDICAL EXPENSES**

<u>YEAR</u>	<u>CONTRIBUTIONS</u>	<u>PARTICIPANTS</u>
2009	136,750	78
2008	131,999	91
2007	113,135	82
2006	97,545	73
2005	104,780	84
2004	106,773	72
2003	103,320	94
2002	77,989	84
2001	76,267	83
2000	67,913	83

**B. DEPENDENT CARE EXPENSES**

<u>YEAR</u>	<u>CONTRIBUTIONS</u>	<u>PARTICIPANTS</u>
2009	22,250	6
2008	23,800	6
2007	22,614	5
2006	18,397	6
2005	16,380	5
2004	20,932	7
2003	27,358	9
2002	40,371	13
2001	43,593	15
2000	66,892	18

DEKALB COUNTY GOVERNMENT

FY 2011 BUDGET

UNION CONTRACT SUMMARY

UNION	AUTHORIZED POSITIONS*	ORIGINAL CONTRACT DATE	CURRENT CONTRACT			
			BOARD ADOPTED DATE**	START DATE	END DATE	STATUS
AFSCME - SYCAMORE AND HIGHWAY CAMPUSES	60.00	12/01/1988	10/21/2009	12/01/2008	12/31/2012	SETTLED
AFSCME - PUBLIC HEALTH	61.00	06/01/2008	06/01/2008	06/01/2008	12/31/2012	SETTLED
AFSCME - REHAB & NURSING CTR	132.95	09/21/1994	07/16/2009	12/01/2008	12/31/2010	UNDER NEGOTIATION
MAP/FOP	95.00	12/01/1984	02/16/2010	12/1/2009	12/30/2013	SETTLED
OPERATING ENGINEERS - HWY	14.00	12/20/2006	12/20/2006	12/1/2006	11/30/2010	UNDER NEGOTIATION
TEAMSTER - COURT SERVICES	<u>13.00</u>	12/01/1992	N/A	12/01/2008	11/30/2010	UNDER NEGOTIATION
TOTAL--6 BARGAINING UNITS	<u>375.95</u>					

\*includes unfunded positions

\*\*or Arbitrator's Award Date

2010 Union Dues

AFSCME: (all units, biweekly)

Full Time: \$18.06

75% Time: \$13.58

50% Time: \$ 9.14

MAP/FOP: (biweekly)

\$13.85

OPERATING ENGINEERS: (biweekly)

Administrative Dues: varies per employee, range from ~\$16.00 to ~ \$22.00

Membership Dues: \$6.93

TEAMSTERS: (monthly)

(Hourly rate x 2.5) + \$3.00 rounded to the nearest dollar

**DEKALB COUNTY GOVERNMENT**

**FY 2011 BUDGET**

**NON-UNION HEALTH INSURANCE RATES PER MONTH  
(Effective January 1, 2011)**

<u>Coverage Category</u>	<u>Single</u>	<u>Family</u>
Active-Working-Employee	126.00	432.00
Active-Working-Employer	<u>560.00</u>	<u>1,154.00</u>
<b>Total</b>	<b><u>686.00</u></b>	<b><u>1,586.00</u></b>
Active-On Leave	686.00	1,586.00
Retired-NonMedicare	686.00	1,586.00
Retired-Medicare	486.00	972.00
COBRA-NonMedicare	700.00	1,618.00
COBRA-Medicare	496.00	991.00
Buyout	2,400/yr	2,400/yr

- RETIRED**                      To be eligible for this benefit, the retiree must be at least age 55, have been employed by the county for at least 8 years, and be eligible for IMRF/SLEP retirement.
- COBRA**                        COBRA coverage is generally available to employees for 18 months or until the person reaches age 65. (See the COBRA law for more exact provisions.)
- LIFE**                            Life insurance is available only to active employees (both working and on leave) and must be provided or purchased if health insurance is elected. All eligible employees receive \$45,000 of coverage at an employer cost of \$13.50 per month.
- TAXES**                        Federal, State, and FICA/Medicare taxes are not paid on the employee's deduction unless the employee elects to complete a form requesting otherwise.
- GEN LEAVE**                    Insurance may be continued for up to one year for an approved General Leave of Absence, provided that the employee makes the necessary premium payments. After that time period, the COBRA option is available.
- DISABILITY**                   Employees who are receiving IMRF/SLEP disability benefits may elect to continue insurance coverage until the end of the disability period.

**DEKALB COUNTY GOVERNMENT**

**FY 2011 BUDGET**

**HISTORY OF MEDICAL INSURANCE RATES**

YEAR	COMPANY	PLAN NUMBER	SINGLE			FAMILY		
			TOTAL	EMPLOYEE*	EMPLOYER*	TOTAL	EMPLOYEE*	EMPLOYER*
2011	BC/BS	P14634	686.00	126.00	560.00	1,586.00	432.00	1,154.00
2010	BC/BS	P14634	660.00	122.00	538.00	1,526.00	414.00	1,112.00
2009	BC/BS	P14634	630.00	116.00	514.00	1,446.00	394.00	1,052.00
2008	BC/BS	P14634	600.00	114.00	486.00	1,380.00	386.00	994.00
2007	BC/BS	P14634	580.00	108.00	472.00	1,340.00	368.00	972.00
2006	BC/BS	P14634	500.00	94.00	406.00	1,154.00	320.00	834.00
2005	BC/BS	P14634	500.00	94.00	406.00	1,154.00	320.00	834.00
2004	BC/BS	P14634	404.00	76.00	256.00	926.00	256.00	670.00
2003	BC/BS	P14634	370.00	70.00	300.00	844.00	234.00	610.00
2002	SELF	DEK 188	320.00	60.00	260.00	720.00	200.00	520.00
2001	SELF	DEK 188	284.00	54.00	230.00	638.00	178.00	460.00
2000	SELF	DEK 188	246.00	46.00	200.00	554.00	154.00	400.00
1995	SELF	DEK188	220.00	30.00	190.00	500.00	178.00	322.00
1990	SELF	DEK188	136.00	0.00	136.00	307.00	38.00	269.00
1985	AETNA	394938	93.97	0.00	93.97	230.52	46.52	184.00

\* Employee and employer portion of premiums reflects non-union amounts.



**DEKALB COUNTY GOVERNMENT**  
**FY 2011 BUDGET**  
**MEDICAL INSURANCE CENSUS HISTORY**

<u>DATE</u>	<u>SINGLE</u>	<u>FAMILY</u>	<u>TOTAL*</u>	<u>BUYOUT</u>	<u>REFUSAL</u>	<u>OPEN POSITIONS</u>	<u>TOTAL ELIGIBLE</u>
December 2010	160	173	333	93	45	57	528
December 2009	188	169	357	103	25	38	523
December 2008	183	166	349	91	27	43	510
December 2007	161	174	335	79	27	49	490
December 2006	153	192	345	80	31	36	492
December 2005	161	179	340	67	30	55	492
December 2004	160	189	349	67	25	46	487
December 2003	154	199	353	63	24	40	480
December 2002	138	207	345	50	34	9	438
December 2001	140	187	327	44	30	29	430
December 2000	133	180	313	38	24	51	426
December 1995	189	123	312	53	0	60	425
December 1990	142	198	340	0	0	N/A	N/A

\*does not include COBRA or retiree policies

**DEKALB COUNTY GOVERNMENT**

**FY 2011 BUDGET**

**NONUNION EMPLOYEE BENEFITS**

<u>CATEGORY</u>		<u>FY2011</u>	<u>FY2010</u>	<u>FY2009</u>
1. Health Insurance - Single	Employee/Month	126	122	116
	Employer/Month	<u>560</u>	<u>538</u>	<u>514</u>
	Total	<u>686</u>	<u>660</u>	<u>630</u>
2. Health Insurance - Family	Employee/Month	432	414	394
	Employer/Month	<u>1,154</u>	<u>1,112</u>	<u>1,052</u>
	Total	<u>1,586</u>	<u>1,526</u>	<u>1,446</u>
3. Life Insurance	Employer/Month	13.50	13.20	12.90
	Amount	45,000	44,000	43,000
4. FICA	Maximum Salary	106,800	106,800	106,800
	Employee	6.20%	6.20%	6.20%
	Employer	6.20%	6.20%	6.20%
5. Medicare	Maximum Salary	N/A	N/A	N/A
	Employee	1.45%	1.45%	1.45%
	Employer	1.45%	1.45%	1.45%
6. Retirement	County - IMRF			
	Employee	4.5%	4.5%	4.5%
	Employer (1)	11.25%	11.06%	8.65%
	Forest Preserve - IMRF			
	Employee	4.5%	4.5%	4.5%
	Employer (1)	15.27%	16.00%	13.28%
County - SLEP	Employee	7.5%	7.5%	7.5%
	Employer (1)	21.23%	21.56%	18.17%
7. Unemployment Insurance	County			
	Maximum Salary	10,000	10,000	10,000
	Employer Rate (2)	1.0%	0.5%	0.5%
	Forest Preserve			
Maximum Salary	(3)	12,520	12,300	
Employer Rate	(3)	0.65%	0.60%	
8. Workers' Compensation	Annual Employer Cost per Employee (4)	\$500	\$500	\$500

(1) Actual Rate; Phase-in and Charged Rates can be found on page E-40.

(2) Rate charged to departments; actual amount of claims paid will vary.

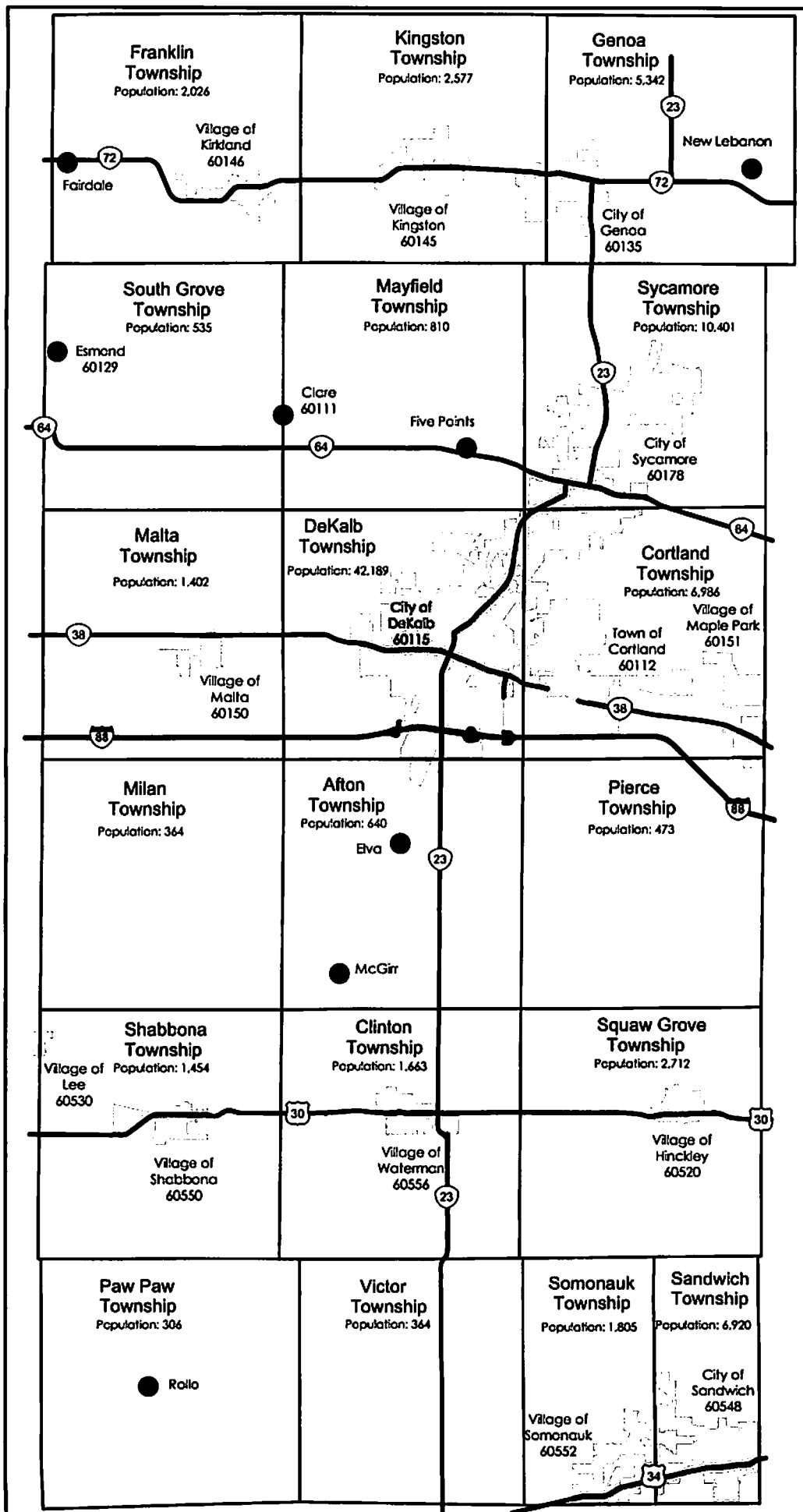
(3) Rate not available at the time of printing.

(4) Actual amount of claims will vary.

## DeKalb County Finance Office -Claims Submission Calendar-

All bills due for payment are to be submitted on claim forms, approved and signed by the department head and submitted to the Finance Office by **Noon** on the first Thursday after the first Wednesday of each month. The checks are then ready for distribution the morning following the County Board Meeting which is the evening of the third Wednesday of each month.

<u>BILLS SUBMITTED BY NOON TO FINANCE FROM DEPARTMENT</u>	<u>WILL BE SUBMITTED FOR BOARD APPROVAL</u>	<u>READY FOR DISTRIBUTION AFTER BOARD APPROVAL</u>
Thurs., December 2, 2010	Wed., December 15, 2010	Thurs., December 16, 2010
Thurs., January 6, 2011	Wed., January 19, 2011	Thurs., January 20, 2011
Thurs., February 3, 2011	Wed., February 16, 2011	Thurs., February 17, 2011
Thurs., March 3, 2011	Wed., March 16, 2011	Thurs., March 17, 2011
Thurs., April 7, 2011	Wed., April 20, 2011	Thurs., April 21, 2011
Thurs., May 5, 2011	Wed., May 18, 2011	Thurs., May 19, 2011
Thurs., June 2, 2011	Wed., June 15, 2011	Thurs., June 16, 2011
Thurs., July 7, 2011	Wed., July 20, 2011	Thurs., July 21, 2011
Thurs., August 4, 2011	Wed., August 17, 2011	Thurs., August 18, 2011
Thurs., September 8 2011	Wed., September 21, 2011	Thurs., September 22, 2011
Thurs., October 6, 2011	Wed., October 19, 2011	Thurs., October 20, 2011
Thurs., November 3, 2011	Wed., November 16, 2011	Thurs., November 17, 2011
Thurs., December 8, 2011	Wed., December 21, 2011	Thurs., December 22, 2011
Thurs., January 5, 2012	Wed., January 18, 2012	Thurs., January 19, 2012



2000 Census Population Figures